

# OILFIELD PRODUCT CATALOGUE

Gate Valve and Manifold Specialist



P: 780-986-1413  
A: 1202 8 Street  
Nisku, Alberta, T9E 7M1  
W: [CycloneSupplies.com](http://CycloneSupplies.com)  
E: [Sales@CycloneSupplies.com](mailto:Sales@CycloneSupplies.com)

V2021CYC

# TABLE OF CONTENTS

3	Manifold Fittings	53	Klondike Lubricants
8	CHD 120T Pneumatic Spider		
9	Handling Equipment		
9	Safety Clamps		
10	Slips		
15	Tongs		
17	Elevators		
20	Drill Tool Gauges		
21	Rig Tool Products		
26	5000 lb Gate Valves		
30	7500 lb Gate Valves		
35	RBCI Gate Valves		
39	Butterfly Valves		
40	Hammer Unions		
41	Air Unions		
42	Hammer Seal Unions		
42	Mud Pump Expendables		
43	Rubber Products		
43	Pipe Wipers		
43	Elevator Balancing Straps/ Tong Pull Back Straps		
44	Shaker Screens		
48	Cyclone Connector		
49	Dragon Line Heaters		

## ABOUT Us

Cyclone Supplies Inc. is an oilfield specialty supply store with over 40 years of experience working with oilfield service, equipment, and supplies. These products are sold to our customers at competitive prices. At Cyclone Supplies, we strive to make sure every order is shipped and processed with the care it deserves.

## CONTACT Us

Please feel free to contact us for more information on our products or for a quote.

Our Office Location  
1202-8 Street, Bay 15  
Nisku, Alberta, Canada  
T9E 7M1

Email: [sales@cyclonesupplies.com](mailto:sales@cyclonesupplies.com)  
Telephone: 1-780-986-1413  
Cell Phone: 1-780-919-3724

# MANIFOLD FITTINGS

At Cyclone Supplies, we sell high pressure manifold fittings that are manufactured from AISI 4130 wrought steel forgings. Our crosses and tees are closed die forged to ensure that grain flow is well defined and correctly contoured. This also ensures that the grain flow has a high integrity as well as a uniform shape. Elbows (90° and 45°) are produced from tubes or hollow bars that are hot formed on bending machines or forged in closed dies.

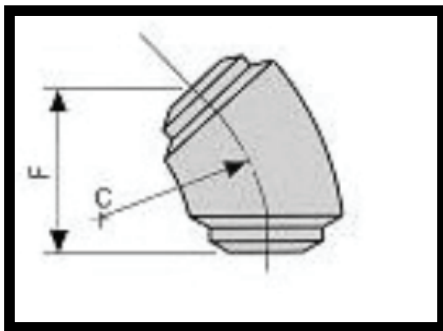
A full range of manifold fittings from sizes of 2" to 6" are available with standard pressure ratings of 5000 psi to 10 000 psi.



## SPECIFICATIONS

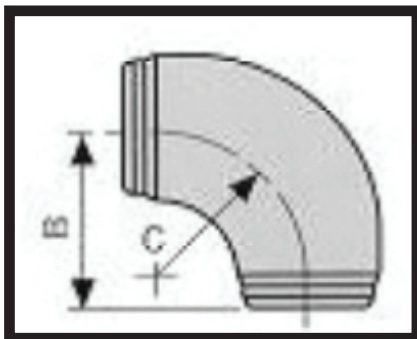
Max. Cold Working Pressure	5000 psi	10 000 psi
Max. Test Pressure	10 000 psi	15 000 psi
Max. Operating Temperature	400 °F	400 °F
Min. Operating Temperature	-50 °F	-50 °F
Nominal Sizes	2" - 6"	2" - 6"
Min. Yield Stress	52K psi	75K psi
Material	Carbon Manganese Steel	Low Alloy Steel

# LONG SWEEP



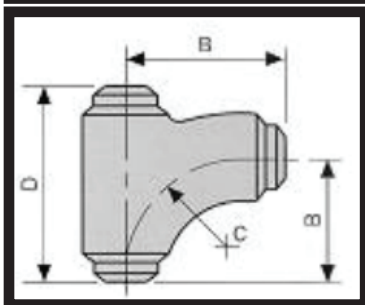
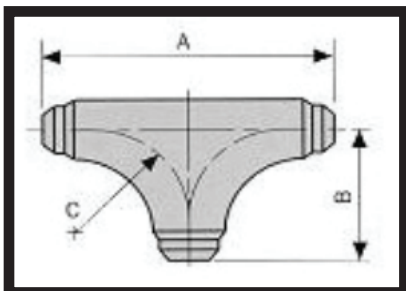
## LONG SWEEP 45 DEGREE ELBOW

Nominal Size	C	F	Weight (XXS)	
	Radius	Centre Lines	kg	lb
2"	6"	8"	9	20
3"	6"	8"	15	33
4"	8.2"	11"	29	64
5"	9.5"	11.5"	38	84
6"	12"	13"	72	158



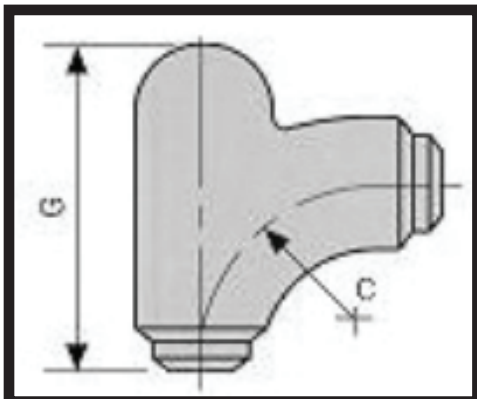
## LONG SWEEP 90 DEGREE ELBOW

Nominal Size	B	C	Weight (XXS)	
	End to Centre	Bore Radius	kg	lb
2"	8"	6"	14	31
3"	8"	6"	22	48
4"	11"	8.2"	42	92
5"	12"	9.5"	57	125
6"	15"	12"	94	207



## LONG SWEEP TEE

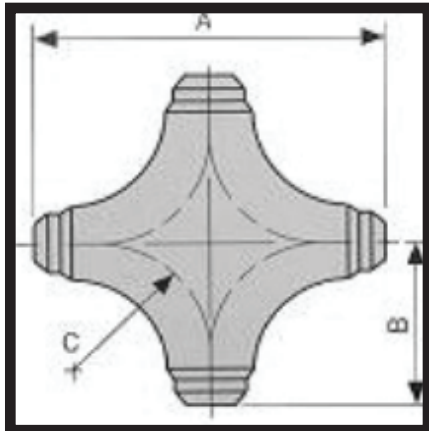
Nominal Size	B	C	D	Weight (XXS)	
	Centre to End	Bore Radius	Bore Radius	kg	lb
2"	8"	6"	13"	36	79
3"	8"	6"	13"	31	68
4"	11"	8.2"	16"	52	114
5"	12"	9.5"	19"	75	165
6"	15"	12"	27"	145	319



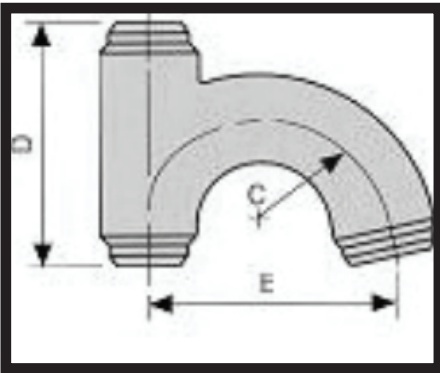
## LONG SWEEP TEE WITH INTEGRAL BULLPLUG

Nominal Size	C	G	Weight (XXS)	
	Bore Radius	Length	kg	lb
2"	6"	15.2"	40	88
3"	6"	15.2"	34	75
4"	8.2"	19.5"	59	130
5"	9.5"	23"	86	189
6"	12"	31.7"	160	352

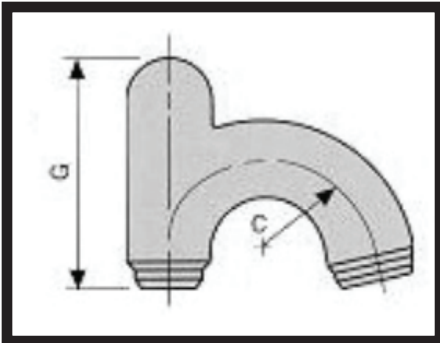
# FULL FLOW/STANDPIPE GOOSENECK



FULL FLOW CROSS					
Nominal Size	A	B	C	Weight (XXS)	
	End to End	Half End to End	Bore Radius	kg	lb
2"	16"	8"	6"	59	130
3"	16"	8"	6"	60	132
4"	22"	11"	8.2"	81	178
5"	24"	12"	9.5"	111	244
6"	30"	15"	12"	243	535

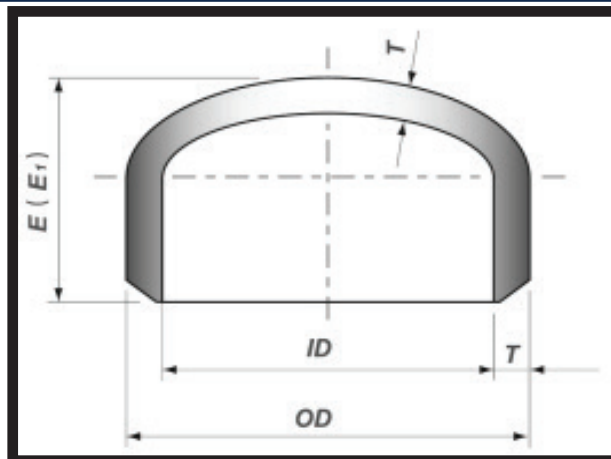


STANDPIPE GOOSENECK (160 DEGREE WITH TOP OUTLET)					
Nominal Size	C	D	E	Weight (XXS)	
	Radius	End to End	Centre to Centre	kg	lb
2"	6"	13"	-"	*	*
3"	6"	13"	12"	*	*
4"	8.2"	16"	14"	*	*
5"	9.5"	19"	16"	*	*
6"	12"	27"	24"	*	*



STANDPIPE GOOSENECK (160 DEGREE WITH TOP INTEGRAL BULLPLUG)				
Nominal Size	C	G	Weight (XXS)	
	Bore Radius	Length	kg	lb
2"	6"	15.2"	*	*
3"	6"	15.2"	*	*
4"	8.2"	19.5"	*	*
5"	9.5"	23"	*	*
6"	12"	31.7"	*	*

# BUTT WELDING CAPS



Nominal Size		Outside Diameter at Bevel	Length		Limiting Wall Thickness for Length E
DN	NPS	OD	E	E1	
50	2	60.3	38	44	5.59
65	2 ½	73.0	38	51	7.11
80	3	88.9	51	64	7.62
90	3 ½	101.6	64	76	8.13
100	4	114.3	64	76	8.64
125	5	141.3	76	89	9.65
150	6	168.3	89	102	10.92
200	8	219.1	102	127	12.70
250	10	273.0	127	152	12.70
300	12	323.8	152	178	12.70
350	14	355.6	165	191	12.70
400	16	406.4	178	203	12.70
450	18	457.0	203	229	12.70
500	20	508.0	229	254	12.70
550	22	559.0	254	254	12.70
600	24	610.0	267	305	12.70
650	26	660.0	267	-	-
700	28	711.0	267	-	-
750	30	762.0	267	-	-
800	32	813.0	267	-	-

## Notes:

1. The configuration of the cap is normal ellipse.
2. Length E applies for the thickness not exceeding the limiting wall thickness. Length E1 applies for the thickness exceeding the limiting wall thickness. For the caps with DN≥650 (NPS26), they will be made subject to the size agreed between purchaser and manufacturer or according to manufacturer's size.

Manifold Fitting Type	Size (in)	Pressure (kPa)	Part Number
Weld Cap	4	10 000	4XXHCAP
	5	10 000	5XXHCAP
Cross	5	7500	CROSS-5-XXH-7.5M
Full Flow Tee	4	10 000	FFT4-XXH-10M
	5	10 000	FFT5-XXH-10M
Gooseneck 160 Degree with Top Outlet	4	10 000	GN160-4-XXH-10M
	5	10 000	GN160-5-XXH-10M
	5	7500	GN160TO-5-XXH-7.5M
Long Sweep 45 Degree Elbow	4	10 000	LS45-4XXH-10M
	4	5000	LS45-4XXH-5M
	5	10 000	LS45-5XXH-10M
	5	7500	LS45-5XXH-7.5M
Long Sweep 90 Degree Elbow	2	10 000	LS90-2XXH-10M
	3	10 000	LS90-3XXH-10M
	4	10 000	LS90-4XXH-10M
	4	5000	LS90-4XXH-5M
	5	10 000	LS90-5XXH-10M
	5	7500	LS90-5XXH-7.5M
Long Sweep Tee	2	10 000	LST2-FF-XXH-10M
	4	10 000	LST4-XXH-10M
	4	5000	LST4-XXH-5M
	5	10 000	LST5-XXH-10M
	5	7500	LST5-XXH-7.5M
Long Sweep Tee with Integral Bull Plug	2	10 000	LSTIBP-2XXH-10M
	3	10 000	LSTIBP-3XXH-10M

# CHD 120T PNEUMATIC SPIDER

CHD 120Ttype Pneumatic Spiders are utilized to handle drill pipe and tubing used in oil well repairing. This type of Spider can accommodate pipe sizes of 1.315" to 5 1/2". The rated capacity for the CHD 120T Type Pneumatic Spider is 120 tons.



Slip Body Size (in)	Handle O.D.		Cylinder Working Pressure	
	CHD/120T		MPa	Psi
	mm	in		
2 1/16	33.4	1.315	0.6 - 0.9	87 - 130
	42.2	1.66		
	48.3	1.9		
	52.4	2 1/16		
3 1/2	60.3	2 3/8		
	73	2 7/8		
	88.9	3 1/2		
4 1/2	88.9	3 1/2		
	101.6	4		
	114.3	4 1/2		
5	127	5		
5 1/2	139.7	5 1/2		

Product	Part Number	Product	Part Number
CHD Spider Model Complete	TC100-S-HD	Bolt for Gate	TB115
#2 Body	TC600-FCR-2	Bolt	TB116
Die Retainer Pin	TC601	Lock Nut	TB117
Model B Link Assembly	TB103	Lift Arm Set Screw	TB118
Model B Left Hand Crank Shaft	TB104	Lift Arm Taper Pin	TB119
Model B Right Hand Crank Shaft	TB105	Shaft Retaining Clip	TB122
Model B Lift Arm	TB106	Model B Crank Shaft Bushing	TB124
Model C Link Assembly	TC103	Model B Link Bushing	TB125
Model C Left Hand Crank Shaft	TC104	Model B Spacer	TB126
Model C Right Hand Crank Shaft	TC105	Model C Crank Shaft Bushing	TC124
Model C Lift Arm	TC106	Model C Spacer	TC126
Yoke	TB107	Safety Latch	TB135
Grease Fitting	TB123	Safety Bolt	TB136
Hex Head Cap Screw	TB110	Pneumatic Cylinder	TB140-1-N
Hex Head Cap Screw	TB111	Pneumatic Cylinder Repair Kit	TB140-R
Hex Nut	TB112	Jam Nut	TB148
Hex Head Cap Screw	TB113	Retainer Pin	TC601
Nut for Gate	TB114	Cotter Pin	TC602-S



# HANDLING EQUIPMENT SAFETY CLAMPS

Our safety clamps are designed to safely handle flush joint tubes or other slick tools to prevent the strings (tubing, drill collar, etc) from dropping into the well. The sizes of type C and T clamps range from 1 1/8" to 15 5/8". Links for the safety clamps can be added or removed, if needed.

## TYPE C

Type C safety clamps are used for handling flush joint pipes, tubing, drill pipes, and drill collars.

Type	Pipe O.D. (in)	No. of Chain Links
WA-C	3 1/2 - 4 5/8	7
	4 1/2 - 5 5/8	8
	5 1/2 - 6 5/8	9
	6 1/2 - 7 5/8	10
	7 1/2 - 8 5/8	11
	8 1/2 - 9 5/8	12
	9 1/2 - 10 5/8	13
	10 1/2 - 11 5/8	14
	11 1/2 - 12 5/8	15
	12 1/2 - 13 5/8	16
	13 1/2 - 14 5/8	17
	14 1/2 - 15 5/8	18

Product	Part Number
Safety Clamp	SCC
Latch	75699
Long Jaw	75801-1
Safety Clamp	7624-5010
Insert	7624-A-4
Screw	7624-A-5
Link Assembly	7624-A-7
Nut	7624-B-5
Link Pin with Cotter Pin	7624-C-5
Spring	7624-E-5



## TYPE T

Type T safety clamps are used for handling flush joint pipes and drill collars.

Type	Pipe O.D. (in)	No. of Chain Links
WA-T	1 1/8 - 2	4
	2 1/8 - 3 1/2	5
	3 1/2 - 4 1/2	6

Product	Part Number
Safety Clamp	SCT3.5-4.5

## UC-3 SLIPS

The UC-3 slips are designed with many narrow segments that are hinged together and wrap around the casing pipe allowing the pressure to be more uniform. The casing string can be easily centered within the bushing or spider with the same load segment. The UC-3 has a 3" taper and it can handle strings with O.D of 16" to 42".

Product	Part Number
7 5/8" Slip Casing	UC37.58
Handle	7704-A-17
Handle Pin With Cotter	7704-A-16
Hinge Pin with Cotter Pin	7704-B-16
Liner Retainer Key with Cotter Pin	7704-A-29



## FLEX HANDLE

### Features:

- Improves ergonomics for safe handling
- Provides additional hand protection
- Reduces hand and back injuries
- An elastomer section that allows the handle to bend and return to its original shape
- For drill pipe slips, casing slips, drill collar slips, etc



Product	Part Number
Varco DP Flex Handle	Varco DP Flex Handle

# SD STYLE DP SLIPS

SD style DP slips have a unique full wrap around grip and insert design that prevents damage from occurring on the drill pipe. The slips' dove tail slots allow the inserts to be held securely in place, allowing these inserts to be easily changed for different pipe sizes. There are 3 different DP slip sizes available at Cyclone Supplies: short (SDS), medium (SDML), and long (SDXL).

Type	Slip Body Size		3 1/2			4 1/2			5		
SDS-S	Pipe Size	in	2 3/8	2 7/8	3 1/2	-	-	-	-	-	-
		mm	60.3	73.0	88.9	-	-	-	-	-	-
	Weight	kg	39.6	38.3	36.4	-	-	-	-	-	-
		lb	87	84	80	-	-	-	-	-	-
SDS	Pipe Size	in	2 3/8	2 7/8	3 1/2	3 1/2	4	4 1/2	4	4 1/2	5
		mm	60.3	73.0	88.9	88.9	101.6	114.3	101.6	114.3	127.6
	Weight	kg	56.1	50.3	48.5	64.9	61.7	57.6	-	-	-
		lb	117	111	107	143	136	127	-	-	-
SDML	Pipe Size	in	2 3/8	2 7/8	3 1/2	3 1/2	4	4 1/2	4	4 1/2	5
		mm	60.3	73.0	88.9	88.9	101.6	114.3	101.6	114.3	127
	Weight	kg	87.8	85.3	81.6	94	90.3	85.3	92.5	88.9	84
		lb	193	188	180	207	199	188	204	196	185
SDXL	Pipe Size	in	-	-	-	3 1/2	4	4 1/2	4	4 1/2	5
		mm	-	-	-	88.9	101.6	114.3	101.6	114.3	127
	Weight	kg	-	-	-	103.9	99.3	93	107.5	103	96.6
		lb	-	-	-	229	219	205	237	227	213
Type	Slip Body Size		5 1/2			5 7/8			7		
SDML	Pipe Size	in	4 1/2	5	5 1/2	5 3/4	5 7/8	-	5 7/8	6 5/8	7
		mm	114.3	127	139.7	-	-	-	-	-	-
	Weight	kg	90.9	84	82.1	-	-	-	-	-	-
		lb	200	185	181	-	-	-	-	-	-
SDXL	Pipe Size	in	4 1/2	5	5 1/2	5 3/4	5 7/8	-	5 7/8	6 5/8	
		mm	114.3	127	139.7	146.1	149.2	-	149.2	168.3	177.8
	Weight	kg	106.1	101.5	95.3	-	-	-	-	-	-
		lb	234	224	210	-	-	-	-	-	-



Product	Part Number
SDML 4 1/4" x 4" Slip	SDML4.5-4
SDML 4 1/2" x 4 1/2" Slip	SDML4.5-4.5
SDML 5" x 5" Slip	SDML5-5
SDML 5 1/2" x 5 1/2" Slip	SDML5.5-5.5
SDML 5 1/2" x 4" Slip	SDML5.5X4
SDML 5" x 4" Slip	SDML5X4
SDML 5" x 4 1/2" Slip	SDML5X4.5
SDS 4 1/2" x 4" Slip	SDS4.5X4
SDS 4 1/2" x 4 1/2" Slip	SDS4.5X4.5
SDXL 4 1/2" x 4 Slip	SDXL4.5X4

Product	Part Number
SDXL 4 1/2" x 4 1/2" Slip	SDXL4.5X4.5
SDXL 5 1/2" x 4" Slip	SDXL5.5X4
SDXL 5 1/2" x 5 1/2" Slip	SDXL5.5X5.5
SDXL 5" x 5" Slip	SDXL5X5
Die Retainers for 4 1/2" Slip	3739
Die Retainers for 5 1/2" Slip	3740
Die Retainers 5" Slip	3741
Hinge Pin with Cotter for SDML Slips	2190
Handle Pin with Cotter Pin	3769
Insert Retaining Screw with Washer	3745

## DC SLIPS

Drill collar slips (DC slips) use button style inserts that hold the collars and tools maximally. These button style inserts can be easily changed by adding or removing segments or by changing button sizes. This type of slip uses a full wrap around design because it provides a positive and fast slip setting. DC slips are offered in three sizes: short (DCS-S), medium (DCS-R), and long (DCS-L).

		DCS-S		DCS-R		DCS-L					
DC OD	in	3 - 4	4 - 4 7/8	4 1/2 - 6	5 1/2 - 7	6 3/4 - 8 1/4	8 - 9 1/2	8 1/2 - 10	9 1/4 - 11 1/4	11 - 12 3/4	12 - 14
	mm	76.2 - 101.6	101.6 - 123.8	114.3 - 152.4	139.7 - 177.8	171.4 - 209.6	203.2 - 241.3	215.9 - 254	235 - 285.7	279.4 - 323.9	304.8 - 355.6
Weight	kg	51	47	54	51	70	78	84	90	116	107
	lb	112	103	120	112	154	173	185	198	256	237
Use in insert bowl No.		API or NO.3						NO.2		NO.1	



Product	Part Number
8" x 9 1/2" DCS-L Slip	DCS-L8-9.5
5 1/2" x 7" DCS-R Slip	DCS-R5.5-7
Handle Pin with Washer and Cotter Pin	3769
Hinge Pin with Cotter Pin for DCS-S and DCS-R Slips	2525
Hinge Pin with Cotter Pin for DCS-L Slip	2520

# DU SLIPS

DU rotary slips are designed for long, trouble free service and are used for API tapered bowls. These slips are composed of an alloy steel that has been heat-treated for strength and wear resistance. DU Regular slips have a 12" long gripping surface designed for well depths of 8000' or less. DU Long slips have a 16" long gripping surface that are designed for deeper wells and heavier drilling strings.

Type			Pipe O.D.		Weight (lbs)
			in	mm	
DU	3 1/2	2 3/8	2 3/8	60.3	-
		2 7/8	2 7/8	73	-
		3 1/2	3 1/2	88.9	-
	4 1/2	3 1/2	3 1/2	88.9	150
		4	4	101.6	141
		4 1/2	4 1/2	114.3	136
	5 1/2	4 1/2	4 1/2	114.3	164
		5	5	127	159
		5 1/2	5 1/2	139.7	146
	7	5 1/2	5 1/2	139.7	190
		6 5/8	6 5/8	168.3	164
		7	7	177.8	154

Product	Part Number
Hinge Spring	7613-211
Hinge Pin	7613-A-12
Liner Retainer Key	7613-A-52
4 1/2" x 4" Short Slip	DU 4.5 X4 SHORT
Flex Handle	DU Flex Handle
4 1/2" x 4" Long Slip	DU4.5-4 LONG
4 1/2" x 4" Regular Slip	DU4.5-4 REG



# CMS CASING SLIPS

CMS casing slips are used for heavy loads because of their fully wrap around grip. They use button type inserts for maximum grip. Casing sizes for CMS slips range from 6 5/8" to 30".

<b>Casing OD</b>	in	4 1/2 - 5	5 1/2 - 6	6 5/8	7	7 5/8	8 5/8	9 5/8	10 3/4
	mm	114.3 - 127	139.7 - 152.4	168.3	177.8	193.7	219.1	244.5	273.1
<b>Weight</b>	kg	72	70	93	88	79	86	105	110
	lb	151.2	147	195.3	184.8	165.9	180.6	220.5	231
<b>Total No. of Segments</b>		9	9	12	12	12	13	14	15
<b>Use in Insert Bowl No.</b>		API or No. 3						No. 2	
<b>Casing OD</b>	in	11 3/4	13 3/8	16	18 5/8	20	24	26	30
	mm	298.5	339.7	406.4	473.1	508	609.6	660.4	762
<b>Weight</b>	kg	136	135	158	185	192	219	238	262
	lb	285.6	283.5	331.8	388.5	403.2	459.9	499.8	550.2
<b>Total No. of Segments</b>		17	18	25	25	26	30	33	37
<b>Use in insert Bowl No.</b>		No. 1			Match with relevant casing bushing				

Product	Part Number
7" CMS Casing Slip	CMS-7"
Right End Segment	5320
Left End Segment	5321
Intermediate Segment	5322
Hinge Pin w/ Cotter Pin	2525
Handle Pin c/w Washer and Cotter	3769
Right and Left Handle	3765
Center Handle	3766



Manual tongs are used in the oilfield to make up and break out pipes. The handling sizes of the tongs can be adjusted by changing the lug jaws and latch steps. At Cyclone Supplies, our tongs feature a tough, heavy duty design that include heat-treated hinge pins and long-lasting “stagger tooth” tong dies (Pyramid). These tongs are designed and manufactured by the standards set by API Spec 7K.

## WW AAX TONGS

Size Range		Rated Torque	
in	mm	lb*ft	kN*m
2 7/8 - 3 3/4	73 - 95.25	40 000	55
3 1/2 - 4 1/2	88.9 - 114.3		
4 1/4 - 5 1/4	107.95 - 133.35	55 000	75
5 - 7	127 - 177.8		
6 7/8 - 8 5/8	174.6 - 219.1	30 000	40
9 - 10 3/4	228.6 - 273.05		
10 3/4 - 11 3/4	273.05 - 298.45		
13 3/8	339.7		



Product	Part Number
Tong Complete w/o Lug Jaws (49 1/2" Lever)	8531-5025
Tong Complete w/o Lug Jaws (41 1/2" Lever)	8531-5057
2 7/8" - 3 3/4" Lug Jaw	4522
3 1/2" - 4 1/2" Lug Jaw	4523
4" - 5 1/4" Lug Jaw	4528
5" - 7 1/4" Lug Jaw	4527
6 7/8" - 8 5/8" Lug Jaw	8531-5192
9" - 10 3/4" Lug Jaw	4524
10 3/4" - 11 3/4" Lug Jaw	4529
13 3/8" Lug Jaw	4530
4 1/2" x 5 1/4" Tong Lug Jaw	1372
Long Jaw	4512
Short Jaw	454
Latch	4553
Hanger	436
Latch Spring	4510
Hinge Pin	4611
Hanger Adjustment Bolt and Nut	4538
Lever End Bolt and Nut	4538
Tong Die Retainer Pin	10114
Tong Set with Standard Levers, Hangers, and 2 3/8" to 13 3/8" Jaws	AAXTONGS



# WW B TONGS

Size Range		Rated Torque kN*m
in	mm	
2 3/8 ~ 3 3/4	60.3 ~ 95.25	48
3 1/2 ~ 4 5/8	88.9 ~ 117.48	
4 1/2 ~ 5 3/4	114.3 ~ 146.05	
5 1/4 ~ 7 1/4	133.35 ~ 184.15	
6 7/8 ~ 8 5/8	174.63 ~ 219.08	
9 ~ 10 3/4	228.6 ~ 273.05	35



Product	Part Number
Tong Lever Complete w/o Lug Jaws (39 5/8" Lever)	8531-5019
Tong Lever Complete w/o Lug Jaws (31 5/8" Lever)	8531-5065
Long Jaw	442
#444 Short Jaw	444
Latch	445
Hanger	436
Latch Spring	4510
Tong Pin	4411
Hanger Adjustment Bolt and Nut	4538
Lever End Bolt and Nut	4538
Tong Die Retainer Pin	10037
2 7/8" - 3 3/4" Lug Jaws	448
3 1/2" - 4 5/8" Lug Jaws	438
#449 Lug Jaw 4 1/2" - 5 3/4"	449
5 1/4" - 7 1/4" Lug Jaw	443
6 7/8" - 8 5/8" Lug Jaws	4420
9" - 10 3/4" Lug Jaws	4421

# WW C TONGS

Short Jaw	Size Range		Rated Torque	
	in	mm	lb*ft	kN*m
2 3/8 - 7	2 3/8 - 3.668	60.33 - 93.17	15 000	20
	2 7/8 - 4 1/4	73.03 - 108		
	3 1/2 - 5 1/4	88.9 - 133.35	25 000	35
	5 1/4 - 7	133.35 - 177.8	35 000	48
7 5/8 - 10 3/4	7 - 8 5/8	177.8 - 219.08	25 000	35
	9 5/8 - 10 3/4	244.5 - 273.05	32 000	44



Product	Part Number
Tong Complete w/o Lug Jaws	8531-5013
2 3/8" - 3 1/2" Lug Jaws	4215
2 7/8" - 4 1/4" Lug Jaws	429
4" - 5 3/4" Lug Jaws	427
5 3/4" - 7" Lug Jaws	423
7 1/4" - 8 5/8" Lug Jaws	428
9 5/8" - 10 3/4" Lug Jaws	4212
Long Jaw	75801-1
Short Jaw	424
Latch	75699
Hanger	426
Latch Spring	4210
Hinge Pin	4211
Hanger Adjustment Bolt and Nut	4217
Lever End Bolt and Nut	4217
Tong Die Retainer Pin	10037



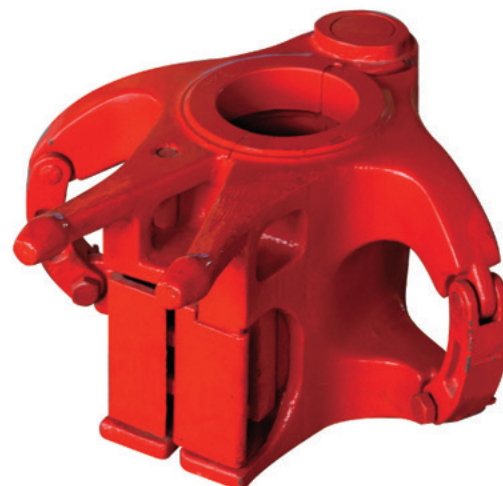
Rig elevators are designed to enable the drilling rig crew to hoist up tubulars in a safe manner.

## TA ELEVATOR

TA elevators are used on tubing, casing, and drill collars. They are balanced for easy handling because of their safety lock and latch and guarded operating handles.

Model	Size (in)			Rated Capacity (tons)	
	DC	Tubing			Casing
		NU	DU		
TA-35	2 7/8 - 3 1/8	1.05 - 2 7/8	1.05 - 2 7/8	-	35
TA-65	2 7/8 - 3 1/8	1.66 - 2 7/8	1.66 - 2 7/8	-	65
TA-100	3 1/8 - 5 1/4	2 3/8 - 5	2 3/8 - 4 1/2	-	100
TA-150	4 1/8 - 11 1/4	-	-	4 1/2 - 10 3/4	150

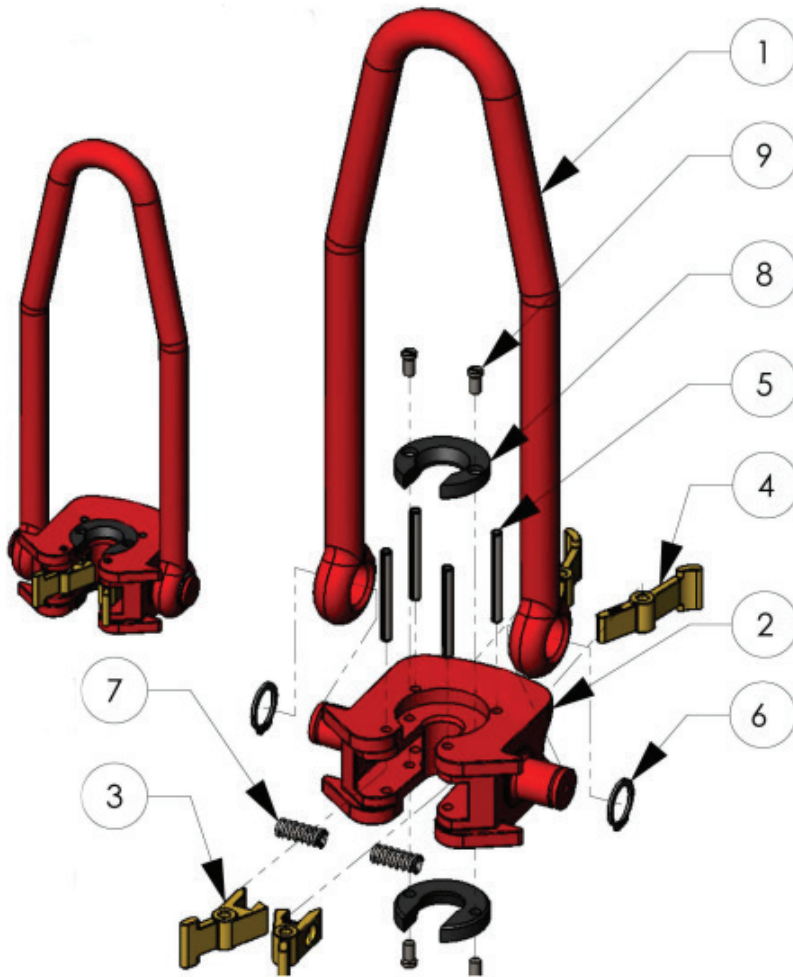
Product	Rated Capacity	Size	Part Number
Elevator	100	2 3/8"	32383-159
		2 7/8"	32383-161
		3 1/2"	32386-163
		4 1/2"	32384-129
	65	2 3/8"	32385-159
		2 7/8"	32385-161
		3 1/2"	32384-163



# SUCKER ROD ELEVATOR

The Sucker Rod Elevator handles rod sizes from 5/8" through 1 1/4". This elevator is designed with versatility in mind when it comes to workovers and well servicing operations. They have an API rated capacity of 20 Tons and 25 Tons. This type of elevator has a spring loaded latch in which the rod can only be released by the operator. The bail and body is made from heat treated alloy steel for maximum strength. All steel specifications are certified.

Item No.	Description	Qty
1	Bail	1
2	Plate Style Body	1
3	Front Latch	2
4	Back Latch	2
5	Roll Pin	4
6	Snap Ring	2
7	Spring	2
8	Rod Plate	2
9	Rod Plate Screw	4



# SUCKER ROD WRENCH

Sucker Rod Wrench is made of a high-quality alloy steel that boasts of an advantage of high hardness and abrasion resistance. Its opening is able to accommodate the square shape of the sucker rod. The balanced design of this wrench can reduce the fatigue of users since it is designed for the manual mounting and demounting of sucker rods.

## Features:

- Made from high quality, heat-treated steel
- Easy to operate

## Caution:

- Before using make sure you choose the right wrench that corresponds with the rod.
- After use, the wrench should be cleaned and kept in a cool, dry place.
- After using it for a long period of time, it should be checked for wear and tear to ensure that the wrench is in the best working condition.

Specification of Applicable Sucker Rod	5/8"	3/4"	7/8"	7/8" HY	1"	1 1/8"	1 1/4"
Wrench Opening Width	23.8	27	27	30.1	34.9	39.7	40.9



Product	Part Number
Sucker Rod Wrench 3/4" - 7/8"	RW3478

# SUCKER ROD HOOK

The Sucker Rod Hook is the hoisting equipment for sucker rods. With its single-hand latch construction and safety rings it is suitable for all depths and operating conditions making it safe and dependable. The sucker rod is designed and manufactured according to API 8A/8C specification for drilling and hoisting equipment.

Rated Capacity	Length	Part Number
20	488 mm	RH20
25	494 mm	RH25
25	798 mm	RH25L
35	960 mm	RH35

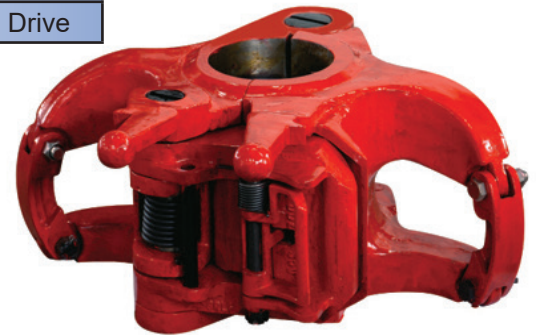


# DRILL PIPE ELEVATOR G SERIES

The G series drill pipe elevators are center latch elevators that contain an 18 degree taper shoulder that are used in applications that handle drilling pipes and drilling tools. This type of elevator is available in rated capacities of 100 tons to 750 tons and sizes of 2 3/8" to 6 5/8".

Model	Size (in)	Rated Capacity (tons)	Remark
DDZ-100	2 3/8 - 5	100	MG
DDZ-150	2 3/8 - 5 1/2	150	RG
DDZ-250	2 3/8 - 5 1/2	250	MGG
DDZ-350	3 1/2 - 5 7/8	350	GG
DDZ-350TD	3 1/2 - 5 7/8	350	For Top Drive
DDZ-500	3 1/2 - 6 5/8	500	HGG
DDZ-500TD	3 1/2 - 5 5/8	500	For Top Drive
DDZ-750	4 - 6 5/8	750	For Top Drive

Product	Rated Capacity	Size	Part Number
Elevator	175	4 1/2"	23540-122
	250		35005-122
	350		31068-122



# DRILL TOOL GAUGES

Drill tool gauges such as the three-point gauge and multi-ring tool gauge (adjustable table ring gauge) are used to measure rig drill bit, drill pipe stabilizer, casing stabilizer, fit joint, drill collar, drill pipe, casing, fishing tool, and other relevant tools.

Gauge Tool Type	Measuring Range	
	mm	in
ZGD60-150 Multi Ring Tool Gauge	60 - 150	2 3/8 - 6
ZG130-320 Multi Ring Tool Gauge	130 - 320	-
ZGD130-320 Multi Ring Tool Gauge	130 - 320	5 - 12 1/2
ZGD270-510 Multi Ring Tool Gauge	270 - 510	10 1/2 - 20
ZG150-320 Three-point Tool Gauge	150 - 320	-
ZG300-550 Three-point Tool Gauge	300 - 500	-
ZG500-700 Three-point Tool Gauge	500 - 700	-



# RIG TOOL PRODUCTS

Since 1999, Rig Tool Products has been serving the Drilling and Well Servicing community to meet the demand for products that exceed industry standards. Our many years of experience in manufacturing have given us the knowledge to meet these demands, allowing us to produce quality parts at affordable prices.

Rig Tool Products offers many consumerable parts for name brand handling tools in today's marketplace. Our specializations include tong dies, slip inserts, tubing spiders, manual slips, power tong parts, elevators, manual tong parts, rubber products, brake blocks, brake rims, and brake bands. Through precise engineering, our goods have the ability to interchange with OEM tools such as Varco, Baash Ross, Wooley, Guiberson, Cavins, Foster, BJ, Oil Country, and many more.

With multiple manufacturing facilities, we have allowed ourselves the opportunity to expand our produce lines as well as increase our inventory, giving us the ability to meet your needs when you need it most. As Rig Tool Products continues to expand our global presence, our company and employees remain dedicated to the standard of service and parts we've come to be known for!

## RIG TOOL DRILLING TOOLS AND PARTS

Rotary Slips		
Manufacturer	Type	Size
Baash Ross	4-1/2" DU Slips	1.660" to 4-1/2"
	5-1/2" DU Slips	3-1/2" to 5-1/2"
	7" DU Slips	4-1/2" to 7"
Den-Con	RDS Slips (Inserts & Parts Only)	2-3/8" to 3-1/2"
	RD Slips (Inserts & Parts Only)	2-3/8" to 5-1/2"
	RDL Slips (Inserts & Parts Only)	2-3/8" to 7"
Varco	SDS Slips	2-3/8" to 4-1/2"
	SDML Slips	2-3/8" to 5-1/2"
	SDXL Slips	3-1/2" to 5-1/2"
Woolley	4-1/2" B (Inserts & Parts Only)	1.660" to 4-1/2"
	5-1/2" B (Inserts & Parts Only)	3-1/2" to 5-1/2"
	4-1/2" XL (Inserts & Parts Only)	3-1/2" to 4-1/2"
	5" XL (Inserts & Parts Only)	4" to 5"
Manual Tongs		
BJ	SDD Tong 100,000 Ft-Lbs	4" to 17"
	DB Tong 65,000 Ft-Lbs	3-1/2" to 17"
	B Tong 55,000 Ft-Lbs	3-1/2" to 13-3/8"
	B Casing Tong 25,000 Ft-Lbs	13-3/8" to 36"
	C Tong 35,000 Ft-Lbs	2-3/8" to 10-3/4"
Web Wilson	AAX Tong	(Ins & Parts Only)
	AAX Casing Tong	(Ins & Parts Only)
	H Tong	(Ins & Parts Only)
	B-Tong	(Ins & Parts Only)
	C-Tong	(Ins & Parts Only)
Casing Slips		
Baasch Ross	UC-3 & UC-4	8-5/8" to 42"
Varco	CMS-XL	6-5/8" to 30"



Drill Collar Slips		
Manufacturer	Type	Size
Baasch Ross	C-1 Drill Collar Slip (Insert & Parts Only)	3" to 12-3/4"
Varco	DCS-S	3" to 4-7/8"
	DCS-R	4-1/2" to 7"
	DCS-L	5-1/2" to 14"
Safety Clamps		
Baasch Ross	Type T Safety Clamp	1-1/8" to 4-1/2"
	Type C Safety Clamp	3-3/4" to 22"
Varco	Type MP-S, MP-R, MP-M, MP-L, & MP-XL	3" to 4-7/8"

Elevators		
Type	Style and Rated Capacity	Size
BJ TA Elevators	TA-35 (35 Ton)	1.050" to 2-7/8"
	TA-65 (65 Ton)	1.660" to 4-1/2"
	TA-100 (100 Ton)	2-3/8" to 5"
	TA-150 (150 Ton)	5-1/2" to 8-5/8"
BJ Slip Type Elevators	LYT (20 Ton) (Ins. Parts Only)	1.050" to 2-1/16"
	MYT (40 Ton)	1.305" to 2-7/8"
	YT (75 Ton)	1.315" to 3-1/2"
	YC (75 Ton)	3-1/2" to 7"
BJ G Series Center Latch 18° Elevators	MG (100 Ton)	2-3/8" to 4-1/2"
	RG (150, 175, 200 Ton)	2-3/8" to 5-1/2"
	MGG (250 Ton)	3-1/2" to 5-1/2"
	GG (350 Ton)	4" to 5-1/2"
BJ X Series Side Door Collar Elevators	SLX 150 Ton Side Door Elev.	6-5/8" to 20"
	SLX 250 Ton Side Door Elev.	6-5/8" to 24-1/2"
BJ Single Joint Elevator	Single Joint Elevators	2-3/8" to 24-1/2"
Woolley	4-1/2" B (Inserts & Parts Only)	1.660" to 4-1/2"
	5-1/2" B (Inserts & Parts Only)	3-1/2" to 5-1/2"
	4-1/2" XL (Inserts & Parts Only)	3-1/2" to 4-1/2"
	5" XL (Inserts & Parts Only)	4" to 5"



## RIG TOOL TONG DIES, SLIP INSERTS, AND JAWS

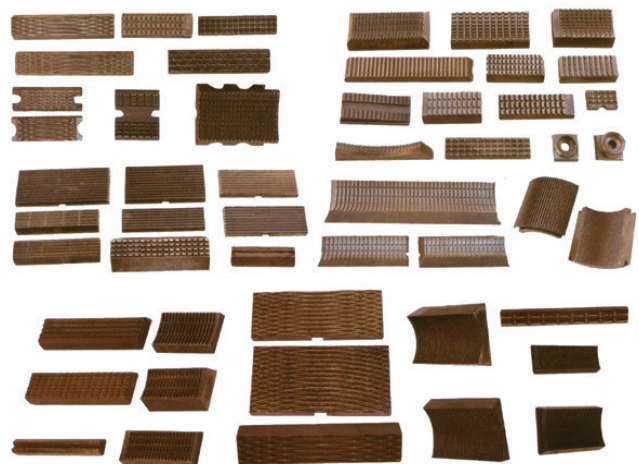
Equipment	Manufacturer	Type
Drill Collar Slips	Baash Ross	C1
	Varco	DCS-S
		DCS-R
		DCS-L
	Woolley	Woolley Type A
Safety Clamps	Baash Ross	Type T
		Type C
	Varco	MP-S
		MP-R
		MP-L
		MP-XL



# RIG TOOL TONG DIES, SLIP INSERTS, AND JAWS

Equipment	Manufacturer	Type
Rotary Slips	Varco	SDS
		SDML
		SDXL
	Den-Con	RDS
		RD
		RDL
	Baash Ross	DU Regular
		DU Long
	Woolley	Woolley B
		Woolley XL
Manual Tongs	BJ	SDD
		DB
		B
		C
	Web Wilson	AAX
		H
		B
		C
	Varco	HT35
		HT55
		HT65
Elevators	BJ	LYT
		MYT
		YT
		YC
		HYC
Casing Slips	Baash Ross	UC-3
		UC-4
	Varco	CMS-L
Power Tongs	Foster	CMS-XL
		58-93R
		54-93
		54-02
		74-92R
		147 Backup
	BJ	RS
		CTS
		Rod Tong
		MS Backup
Type	Size	Part Number
Diamond Tooth Tong Dies	3/8" x 1" x 3 7/8"	DT1505
	7/16" x 1" x 3 7/8"	DT1511
	1/2" x 1" x 3 7/8"	DT1521
	9/16" x 1" x 3 7/8"	DT1532
	5/8" x 1" x 3 7/8"	DT1541
	11/16" x 1" x 3 7/8"	DT1542

Equipment	Manufacturer	Type
Tubing Spiders	Guiberson	T-40 (H1)
		T-60 (F1)
	Cavins	Model B
		Model C
		Model C-HD
		Model F
	Oil Country	Model G
	Woolley	Woolley B
		Woolley XL
	BJ	BJ-50 Ton
		100 Ton



# RIG TOOL WELL SERVICING TOOLS AND PARTS

Tubing Spiders		
Type	Style	Size
BJ Tubing Spiders	50 Ton (Inserts & Parts Only)	1.660" to 3-2/2"
	100 Ton (Inserts & Parts Only)	2-3/8" to 3-1/2"
Cavins Spiders	Model B (55 Ton) (Inserts & Parts Only)	1.315" to 2-7/8"
	Model C (82.5 Ton)	1.315" to 5-1/2"
	Model C-HD (125 Ton)	1.315" to 5-1/2"
Guiberson	T-40 (40 Ton) (Inserts & Parts Only)	1.660" to 3-1/2"
	T-60 (60 Ton)	1.660" to 3-1/2"
Oil Country	Model G (60 Ton)	1.660" to 4-1/2"
Hydra Rig Spiders	Model 150, 225, 300 (Inserts Only)	1.660" to 7-5/8"
Mission	Shallow & Deep Well Slips (Inserts Only)	1.315" to 3-1/2"
BJ-Sucker Rod Elevators	Rod Elevator Plate Type	5/8" to 1-1/8"
	Rod Elevator Solid Body	5/8" to 1-1/8"



## RIG TOOL POWER TONGS

Power Tongs		
Type	Style	Size
BJ Hydraulic Tongs	RS, SA, BTS Open Head Tong 100 Ton (Inserts & Parts Only)	1.660" to 3-2/2"
	CTS Open Head Tong Torque 1,200 to 4,650 Ft-Lbs	2-3/8" to 5-1/2"
	Rod Tong Torque 300 to 1370 Ft-Lbs	5/8" to 1-1/8"
	MS Tong Back Up Tool	1.900" to 4-1/2"
Foster Hydraulic Tubing Tongs	Model 74-92R Closed Head Tong Torque 100 to 2,500 Ft-Lbs	1.315" to 3-1/2"
	Model 58-93R Closed Head Tong Torque 300 to 6,000 Ft-Lbs	1-5/16" to 7"
	Model 54-93 Closed Head Tong Torque 300 to 1,500 Ft-Lbs	1-5/16" to 7"
	Model 54-02 Closed Head Tong Torque 300 to 1,500 Ft-Lbs	2-3/8" to 10-3/4"
	147 Backup Tool Assembly	1-5/16" to 6-1/16"
Hillman Kelley	Model 500-C	1.050" to 3-1/2"
	Model 3700-H (Inserts & Parts Only)	1.050" to 4-1/2"
	Model 4600-H (Inserts & Parts Only)	1.050" to 4-1/2"
	Model 5500-H (Inserts & Parts Only)	1.050" to 5-1/2"
Oil Country Closed Head Tongs	Planetary Gear Driven	1.05" to 4.50"
	Chain Driven	1.05" to 5.50"
Oil Country Open Head Tongs	Planetary Gear Driven	1.05" to 6.125"
	Chain Driven	1.05" to 6.125"
Sucker Rod Tongs		
BJ	Power Rod Tong	5/8" to 1-1/8"





# RIG TOOL RUBBER PRODUCTS

Type	Style	Size
Guiberson Type Swab Cups	TUF Tubing Swab Cups	2-3/8" to 2-7/8"
	UF Tubing Swab Cups	1.315" to 3-1/2"
	RUF Tubing Swab Cups	2-3/8" to 2-7/8"
	TA Tubing Swab Cups	1.315" to 3-1/2"
	MV Tubing Swab Cups	2.000" to 3-1/2"
	J Tubing & Casing Wire Swab Cups	2-3/8" to 4"
	GW Tubing & Casing Swab Cups	2-3/8" to 4"
	V Tubing & Casing Swab Cups	2.000" to 3-1/2"



## MISCELLANEOUS EQUIPMENT

- Guiberson Tyoe H Oil Savers - Single and Tandem
- Rope Sockets & Sinker Bars
- Kelly Rollers - Hex or Square
- Kelly Wipers - Hex or Square

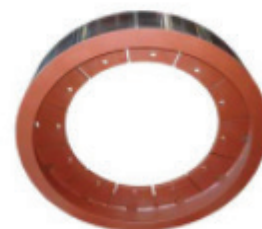
# RIG TOOL BRAKE PRODUCTS

## BRAKE RIMS & BRAKE BANDS ASBESTOS BRAKE BLOCKS

- BDW
- Bethlehem
- Brewster/skytop
- Cabot/Franks
- Cardwell
- Challenger
- Cooper
- Crane Carrier
- Continental Emsco
- Dreco/Kremco
- Gardner Denver
- Hopper
- Ideco
- Mid-Continent
- (Unit Rig)
- National
- Oilwell
- OIME
- Pemco
- RMI
- Seacoast
- Superior
- Wagner Moorehouse
- Wilson

## BRAKE RIMS

- Constructed to meet or exceed O.E.M. Standards
- Hard surfaced - overlay 450 BHN
- Longer life - 5/16" wear depth on brake surface
- Thicker water jackets - resistant to erosion
- Balanced and ground - for better performance



## BRAKE BANDS

- Constructed to meet or exceed O.E.M. standards
- A-242 material has better Tensile Strength Corrosion Resistance over other materials

## BRAKE BLOCKS

- Constructed to meet or exceed O.E.M. Standards
- Blocks are cut, drilled and rolled to precise standards

# 5000 LB GATE VALVES

## Features

- Simple structure that is light weight and easy to operate
- Corrosion and high temperature resistant
- Main components are composed from high strength, heat treated alloy steels
- Surfaces susceptible to friction are plated with anti-friction chromium
- Surfaces in contact with air and media are given anti-septic treatment
- Uses an elastomer seal system in which a cylindrical elastic seat with a one-piece design fits into a body cavity
- All 5000 lb valves are available with LP threaded or XXH BW connections



## Technical Specifications:

<b>Rated Working Pressure:</b>	5000 psi
<b>Nominal Diameter:</b>	2" - 5" (50 mm - 125 mm)
<b>Working Temperature:</b>	-29 °C - 121 °C
<b>Suitable Media:</b>	water, mud, fracturing fluid, crude oil
<b>Connection Type:</b>	LP



# 5000 WP MATERIAL SPECIFICATIONS

<b>Size (in)</b>	2, 3, 4, and 5x4
<b>Body All Types</b>	A-487 Cast Steel
<b>Bonnet</b>	A-487 Cast Steel
<b>Coupling</b>	A-487 Cast Steel
<b>Stem</b>	316 Stainless Steel
<b>Seat</b>	70 Durometer A Buna-N A-216 Cast Steel
<b>Elastomer Insert</b>	
<b>Gate</b>	316 Stainless Steel
<b>Studs</b>	A-320-L7 Steel
<b>Nuts</b>	A-320-L7 Steel
<b>Optional Trims</b>	
<b>Seat</b>	90 Durometer A Peroxide Cured Buna-N or 90 Durometer A Fluoroelastomer 316 Stainless Steel
<b>Elastomer Insert</b>	
<b>Studs</b>	A-193-B7M
<b>Nuts</b>	A-194-2HM Steel
<b>Coatings *</b>	Baker 10, 11, 12

\*Internally applied plastic coating, 5 to 6 mil thickness for bodies and bonnets; for bonnets only on valves with welded ends



**2" 5000 lb Gate Valve**

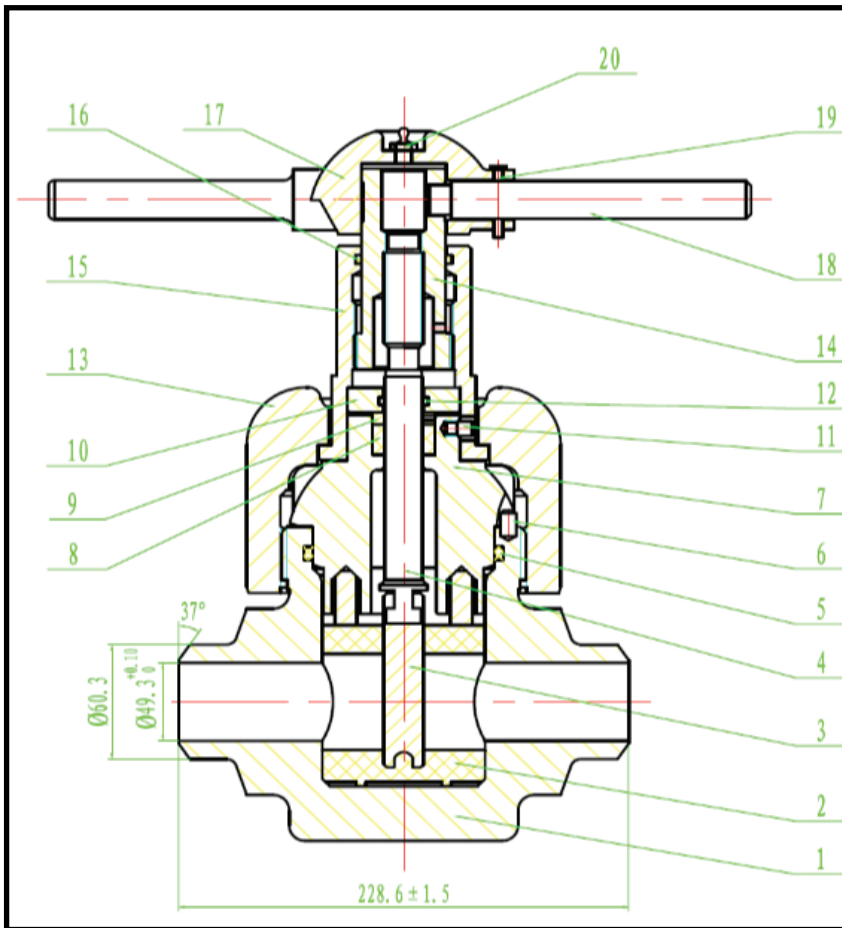


**3" 5000 lb Gate Valve**



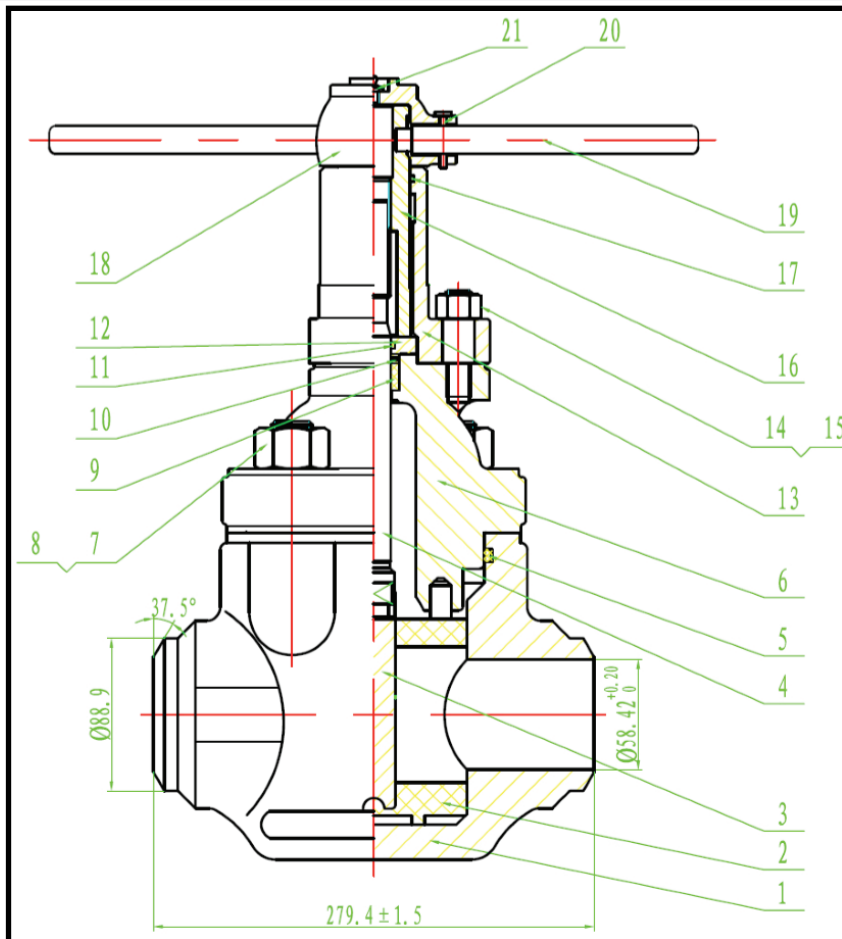
**4" 5000 lb Gate Valve**

## 2" 5000 lb Gate Valve



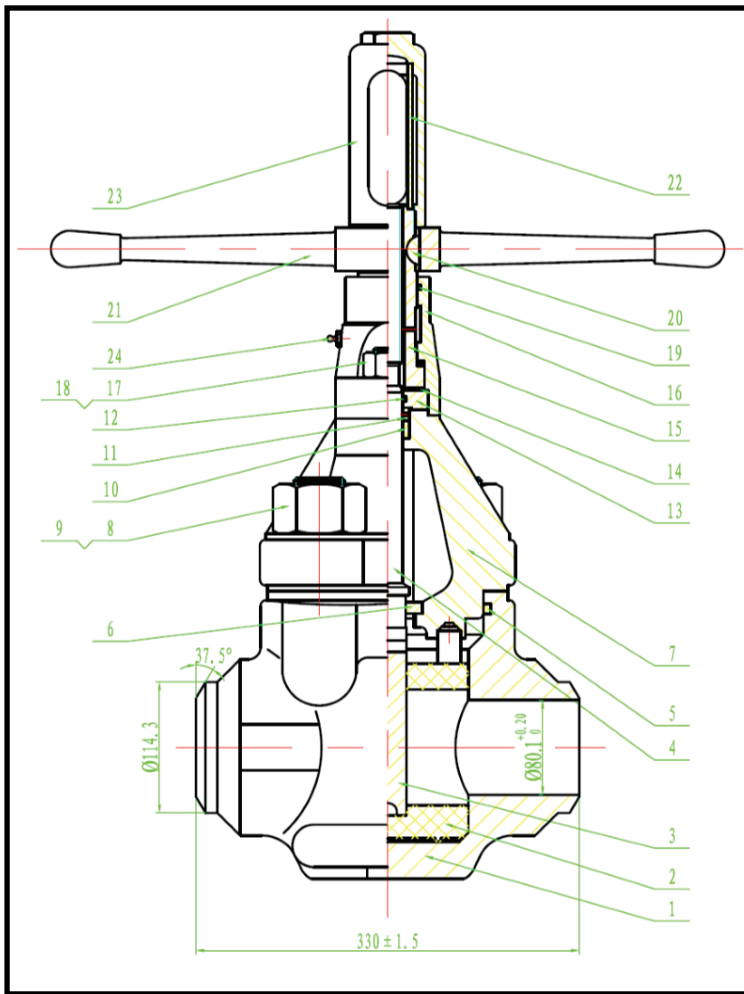
Product	Part Number
Demco Gate Valve XXH BW	DGV2-5000XXH
Lower Body	1
Bonnet	7
Bonnet Seal	5
Index Pin	6
Gate	3
Seat	2
Stem Packing Ring	8
Stem Seal Assembly	9
Stem	4
Coupling	13
Retainer	10
Lock Screw	11
Screw Housing	15
Stem Screw Seal	16
Stem Screw	14
Handle	18.1
Lock Handle	18
Lock Handle Pin	19
Lube Fitting	20
Hub	17
O'Ring Kit	CGVORK2-5M

## 3" 5000 lb Gate Valve



Product	Part Number
Demco Gate Valve XXH BW	DGV3-5000XXH
Lower Body	1
Gate	3
Bonnet Seal	5
Bonnet	6
Seat	2
Stem Packing Ring	9
Stem Seal Assembly	10
Stem	4
Coupling	14-15
Retainer	11
Lock Screw	16
Screw Housing	13
Stem Screw Seal	17
Stem Screw	16
Handle	18
Lock Handle	19
Lock Handle Pin	20
Lube Fitting	21
Index Pin	CGVIP3-5M
O'Ring Kit	CGVORK3-5M

# 4" 5000 lb Gate Valve



Product	Part Number
Demco Gate Valve XXH BW	DGV4-5000XXH
Lower Body	1
Gate	3
Seat	2
Stem Packing Ring	10
Stem Seal Assembly	11
Stem	4
Coupling	8-9
Retainer	13
Lock Screw	5
Screw Housing	16
Stem Screw Seal	12
Stem Screw	15
Handle	2
Lock Handle	20
Lube Fitting	24
Bonnet	7
Down Stop Ring	6
O'Ring Kit	CGVORK4-5M

# 7500 LB GATE VALVES

## Features

- Simple structure that is light weight and easy to operate
- Corrosion and high temperature resistant
- Main components are composed from high strength, heat treated alloy steels
- Surfaces susceptible to friction are plated with anti-friction chromium
- Surfaces in contact with air and media are given anti-septic treatment
- Uses an elastomer seal system in which a cylindrical elastic seat with a one-piece design fits into a body cavity

## Technical Specifications:

Rated Working Pressure:	7500 psi
Nominal Diameter:	2" - 5" (50 mm - 125 mm)
Working Temperature:	-29 °C - 121 °C
Suitable Media:	water, mud, fracturing fluid, crude oil
Connection Type:	butt weld



**2" 7500 lb Gate  
Valve FXF 1002**



**2" x 3" 7500 lb  
Gate Valve XXH  
BW**



**3" 7500 lb Gate  
Valve XXH BW**

# 7500 WP MATERIAL SPECIFICATIONS

Pressure Rating	7500 WP
Size (in)	2, 3, 4, and 5x4
Body	A-487-4D Steel
Bonnet	A-487-4D Steel
Stem	A-479 316 Stainless Steel
Seat Elastomer Insert	92 Durometer A Buna-N Steel (NACE MRO175-97 Compliant)
Gate	316 Stainless Steel with Tungsten Carbide Coating or 17-4 PH
Studs	A-320-L7 Steel
Nuts	A-320-L7 Steel
Coatings	None
Optional Trims	
Studs	A-193-B7M Steel
Nuts	A-194-2HM Steel

# 7500 WP DIMENSIONS

Pressure Rating	7500 WP			
Size (in)	2	3	4	5x4
Weld End	Weld are manufactured for XXH or 7500 WP			
Weight (lb)	210	210	265	265



**4" x 5" 7500 lb  
Gate Valve XXH  
BW**

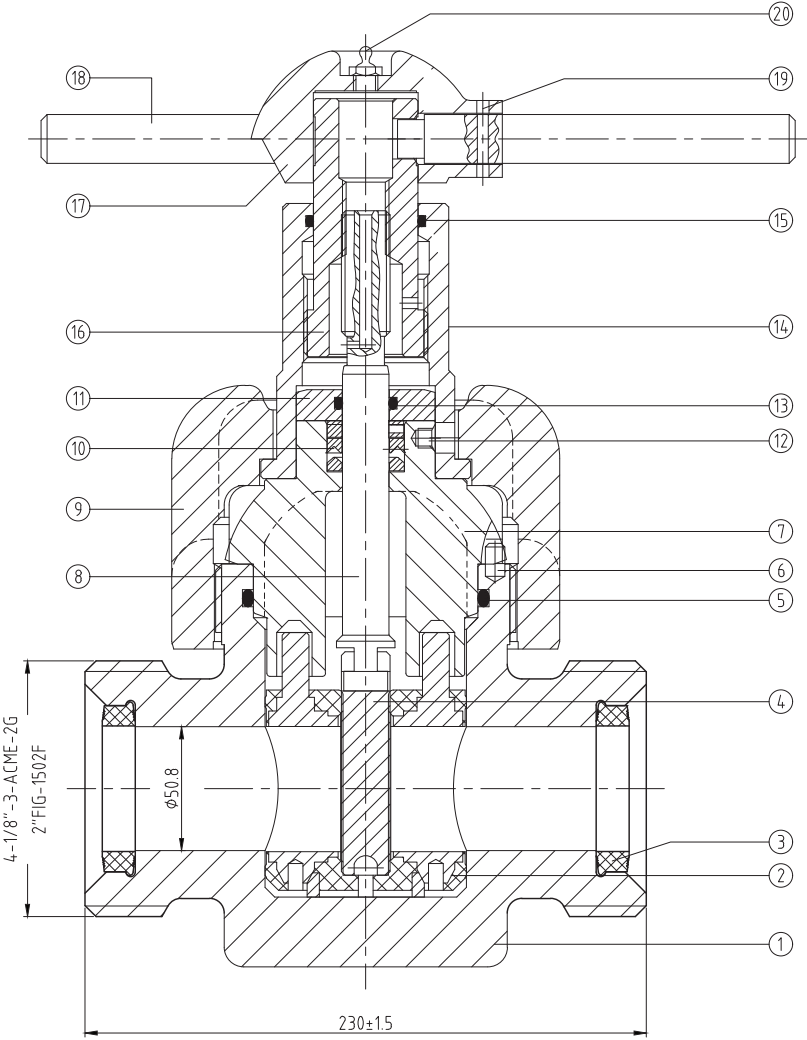


**5" 7500 lb Gate  
Valve XXH BW**

**780-986-1413**

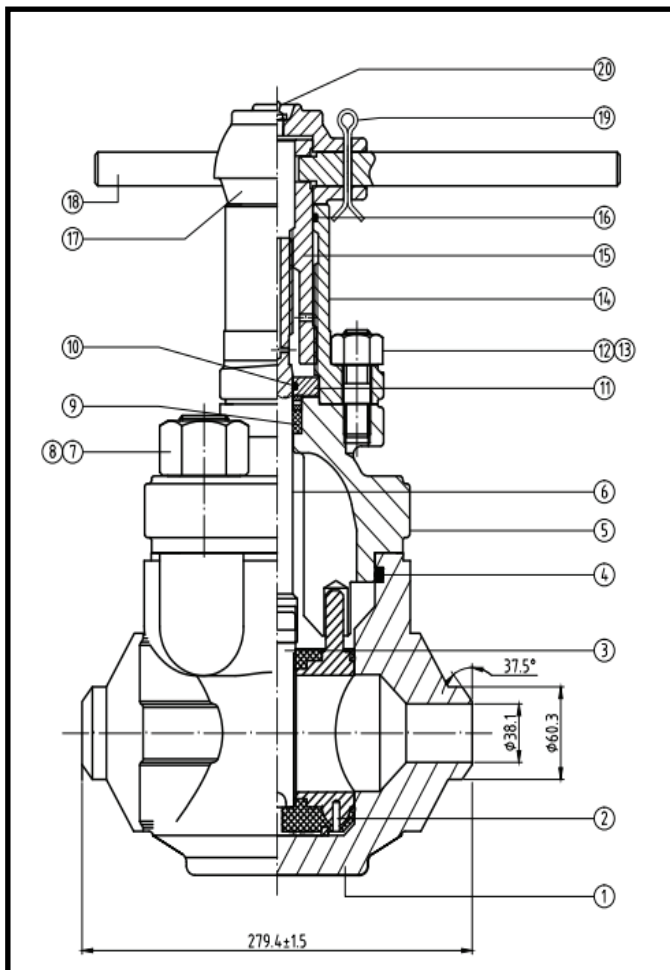


# 2" 7500 LB GATE VALVE



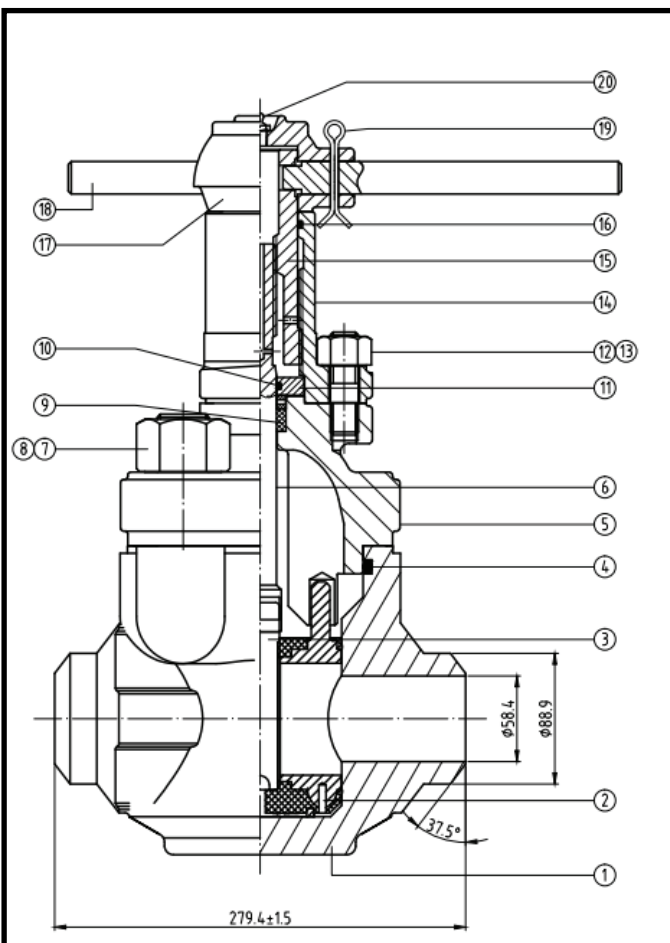
Product	Part Number
Lube Fitting	20
Lock Handle Pin	19
Lock Handle	18
Handle	17
Stem Screw	16
Stem Screw Seal	15
Screw Housing	14
Secondary Seal	13
Lock Screw	12
Retainer	11
Stem Seal Assembly	10
Coupling	9
Stem	8
Bonnet	7
Index Pin	6
Bonnet Seal	5
Gate	4
Seal Ring	3
Seat Assembly	2
Body	1





## 2" x 3" 7500 lb Gate Valve

Product	Part Number
Gate Valve XXH BW	MGV2-7500-BW
Lube Fitting	20
Lock Handle Pin	19
Lock Handle	18
Hub	17
Stem Screw Seal	16
Stem Screw	15
Screw Housing	14
Bonnet Stud Nut	13
Bonnet Stud	12
Retainer	11
Secondary Seal	10
Stem Seal Assembly	9
Body Stud Nut	8
Body Stud	7
Stem	6
Bonnet	5
Bonnet Seal	4
Gate	3
Seat Assembly	2
Body	1

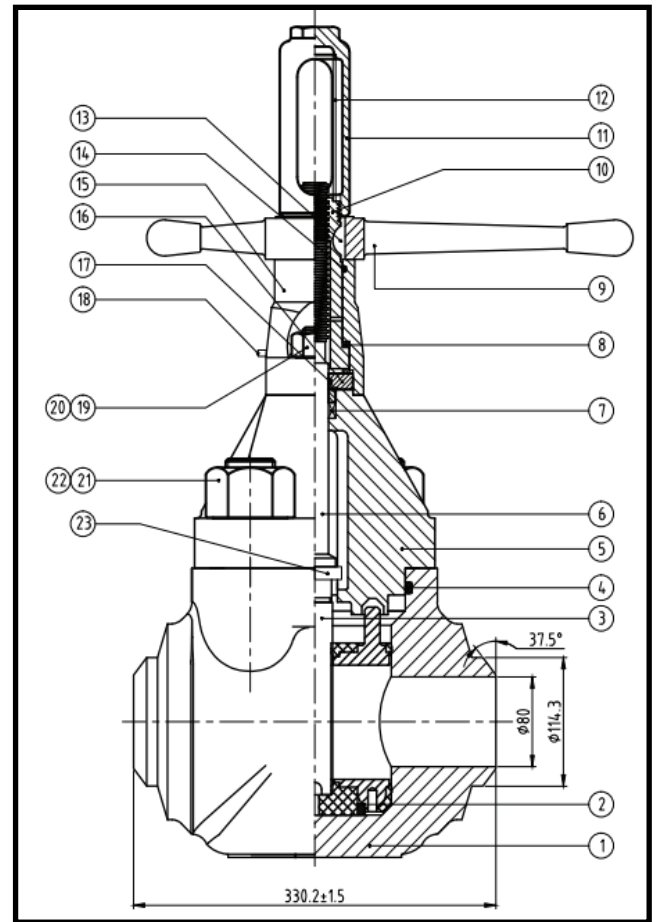


## 3" 7500 lb Gate Valve

Product	Part Number
Gate Valve XXH BW	MGV3-7500-BW
Lube Fitting	20
Lock Handle Pin	19
Lock Handle	18
Hub	17
Stem Screw Seal	16
Stem Screw	15
Screw Housing	14
Bonnet Stud Nut	13
Bonnet Stud	12
Retainer	11
Secondary Seal	10
Stem Seal Assembly	9
Body Stud Nut	8
Body Stud	7
Stem	6
Bonnet	5
Bonnet Seal	4
Gate	3
Seat Assembly	2
Body	1

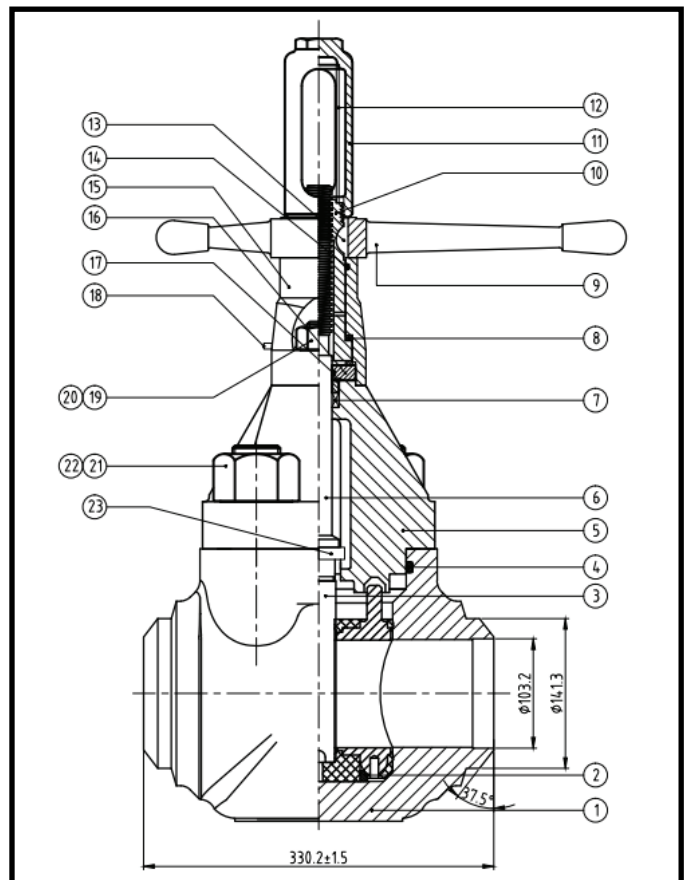
Product	Part Number
Gate Valve XXH BW	MGV4-7500-BW
Downstop Ring	23
Body Stud Nut	22
Body Stud	21
Bonnet Stud Nut	20
Bonnet Stud	19
Lube Fitting	18
Secondary Seal	17
Retainer	16
Screw Housing	15
Stem Screw Seal	14
Key	13
Tube	12
Stem Cap	11
Stem Screw	10
Hand	9
Bearing	8
Stem Seal Assembly	7
Stem	6
Bonnet	5
Bonnet Seal	4
Gate	3
Seat Assembly	2
Body	1

## 4" 7500 lb Gate Valve



Product	Part Number
Gate Valve XXH BW	MGV5-7500-BW
Downstop Ring	23
Body Stud Nut	22
Body Stud	21
Bonnet Stud Nut	20
Bonnet Stud	19
Lube Fitting	18
Secondary Seal	17
Retainer	16
Screw Housing	15
Stem Screw Seal	14
Key	13
Tube	12
Stem Cap	11
Stem Screw	10
Hand	9
Bearing	8
Stem Seal Assembly	7
Stem	6
Bonnet	5
Bonnet Seal	4
Gate	3
Seat Assembly	2
Body	1

## 4" x 5" 7500 lb Gate Valve



## Features:

- Main compression components are composed of alloy steel that are in accordance with the standards set by API SPEC 6A
- Metallic sealing is highly wear resistant, highly corrosion resistant, and uses nickel alloy to prolong service life
- Stem seal packing uses a special composite material to reduce valve opening movement
- Connector between the body and bonnet keeps the structure of the valve simple and ensures that the sealing performance remains excellent

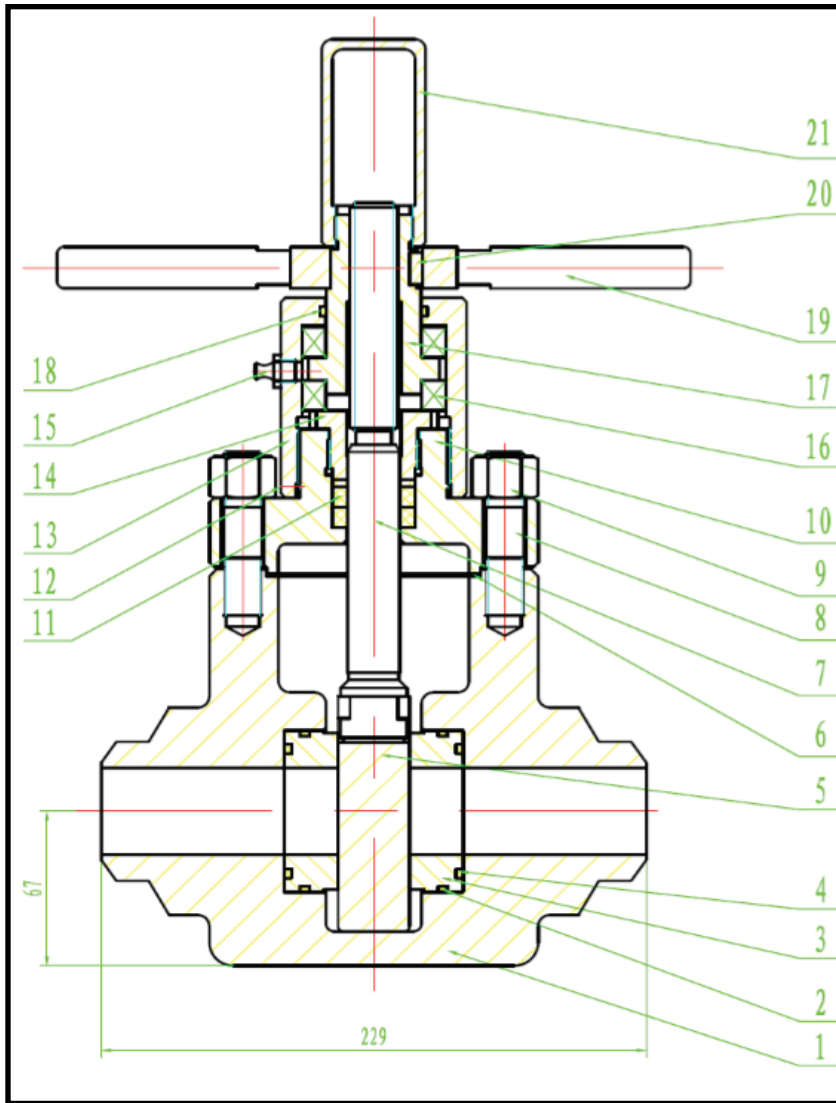
## Technical Specifications:

<b>Rated Working Pressure:</b>	7500 psi
<b>Nominal Diameter:</b>	2" - 5" (50 - 125 mm)
<b>Working Temperature:</b>	-45 °C - 121 °C
<b>Suitable Media:</b>	crude oil, natural gas, drilling fluid, water
<b>Product Specification Grade:</b>	PSL2
<b>Performance Requirement Grade:</b>	PR1
<b>Material Grade:</b>	DD
<b>End Outlet Connection:</b>	API 6A, union, flange, butt weld

## RBCI GATE VALVE



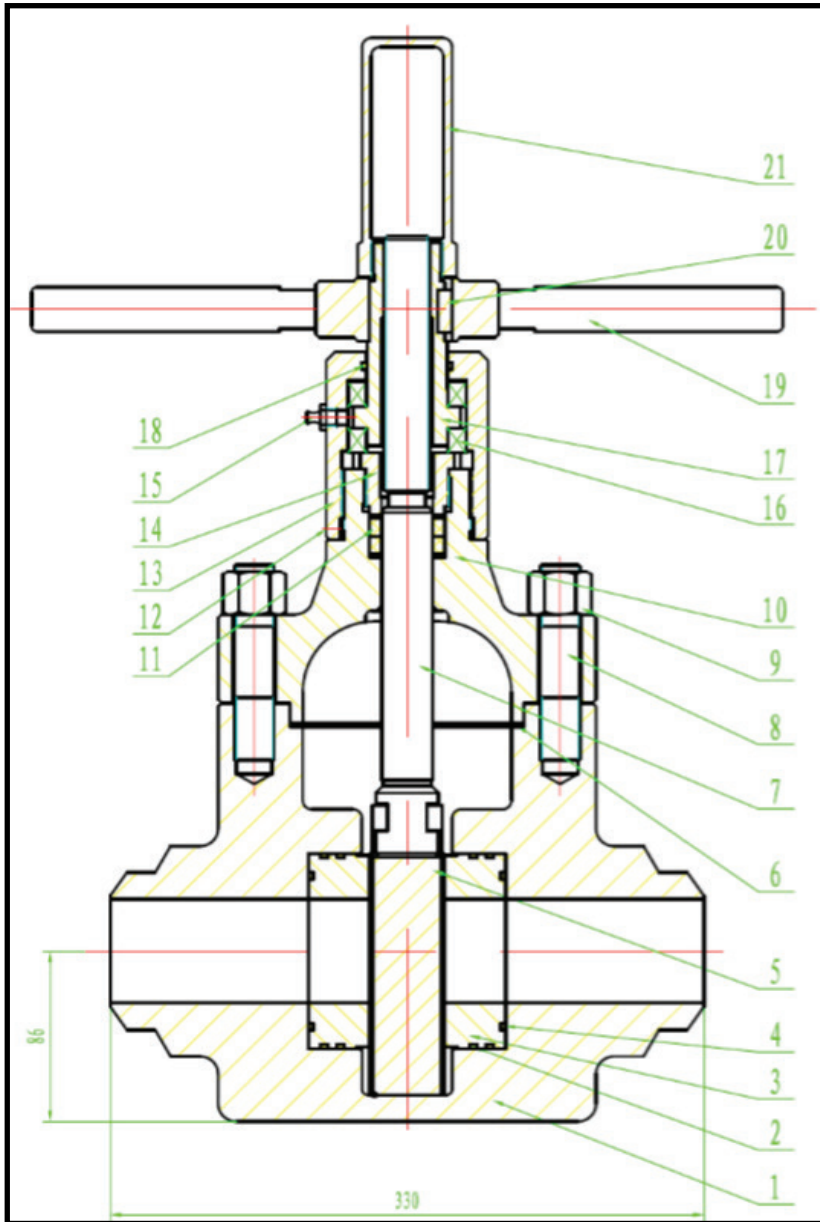
# 2" 7500 lb RBCI Gate Valve



Product	Part Number
Gate Valve with 1502 Threaded Ends	RBMV2751502
Gate Valve with XXH BW	RBMV275XXHBW
Body	YOUDM52-50-01
Body Seat O'Ring for XXH BW	YOUDM52-50-02
Seat Body O'Ring for 1502 Threaded Ends	YOUDM52-50-02T
Seat for XXH BW	YOUDM52-50-03
Seat Ring for 1502 Threaded Ends	YOUDM52-50-03T
Seat O'Ring for XXH BW	YOUDM52-50-04
Seat Seal Ring for 1502 Threaded Ends	YOUDM52-50-04T
Gate for XXH BW	YOUDM52-50-05
Gate for 1502 Threaded ends	YOUDM52-50-05T
Gasket	YOUDM52-50-06
Stem for XXH BW	YOUDM52-50-07
Stem for 1502 Threaded Ends	YOUDM52-50-07T
Body Stud	YOUDM52-50-08
Body Nut	YOUDM52-50-09
Bonnet	YOUDM52-50-10
Stem Packing	YOUDM52-50-11
Housing Screw	YOUDM52-50-12
Housing	YOUDM52-50-13
Stem Packing Retainer	YOUDM52-50-14
Lube Fitting	YOUDM52-50-15
Bearing	YOUDM52-50-16
Stem Screw	YOUDM52-50-17
Secondary Seal	YOUDM52-50-18
Handwheel	YOUDM52-50-19
Keyway	YOUDM52-50-20
Top Cap	YOUDM52-50-21
Stem Packing Washer	YOUDM52-50-PW
Seal Kit for XXH BW	YOUDM52-50-SK
Seal Kit for 1502 Threaded Ends	YOUDM52-50-SKT

\* "T" are only used when parts are for 1502 integral style valves

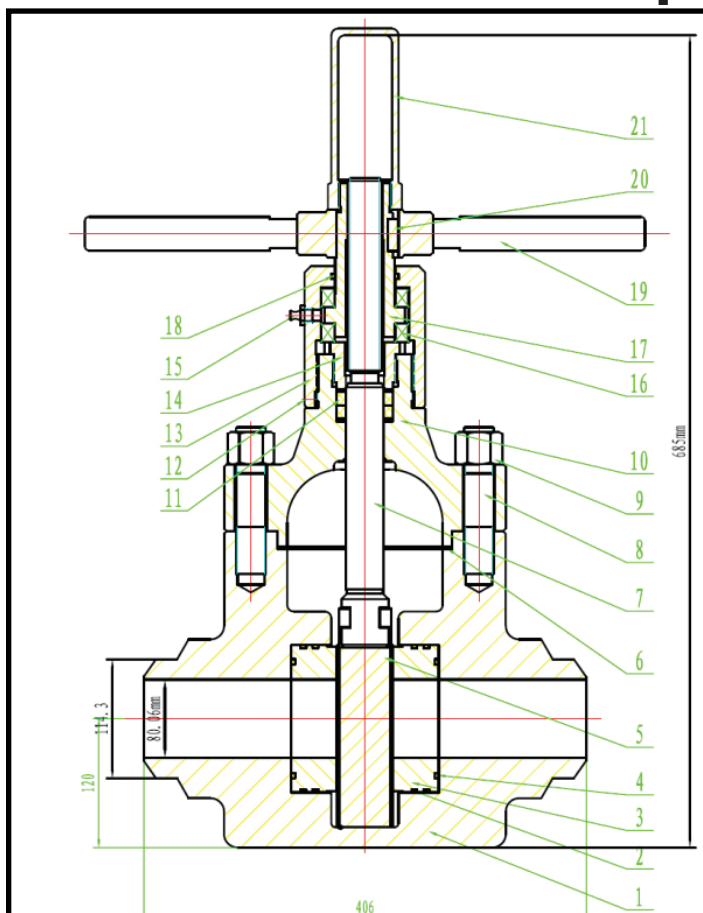
# 3" 7500 lb RBCI Gate Valve



Product	Part Number
Gate Valve with 1502 Threaded Ends	RBMV3751502
Gate Valve with XXH BW	RBMV375XXHBW
Body	YOUDM52-80-01
Body Seat O'Ring for XXH BW	YOUDM52-80-02
Seat Body O'Ring for 1502 Threaded Ends	YOUDM52-80-02T
Seat for XXH BW	YOUDM52-80-03
Seat Ring for 1502 Threaded Ends	YOUDM52-80-03T
Seat O'Ring for XXH BW	YOUDM52-80-04
Seat Seal Ring for 1502 Threaded Ends	YOUDM52-80-04T
Gate for XXH BW	YOUDM52-80-05
Gate for 1502 Threaded ends	YOUDM52-80-05T
Gasket	YOUDM52-80-06
Stem for XXH BW	YOUDM52-80-07
Stem for 1502 Threaded Ends	YOUDM52-80-07T
Body Stud	YOUDM52-80-08
Body Nut	YOUDM52-80-09
Bonnet	YOUDM52-80-10
Stem Packing	YOUDM52-80-11
Housing Screw	YOUDM52-80-12
Housing	YOUDM52-80-13
Stem Packing Retainer	YOUDM52-80-14
Lube Fitting	YOUDM52-80-15
Bearing	YOUDM52-80-16
Stem Screw	YOUDM52-80-17
Seal	YOUDM52-80-18
Handwheel	YOUDM52-80-19
Keyway	YOUDM52-80-20
Stem Cap	YOUDM52-80-21
Seal Kit for XXH BW	YOUDM52-80-SK
Seal Kit for 1502 Threaded Ends	YOUDM52-80-SKT

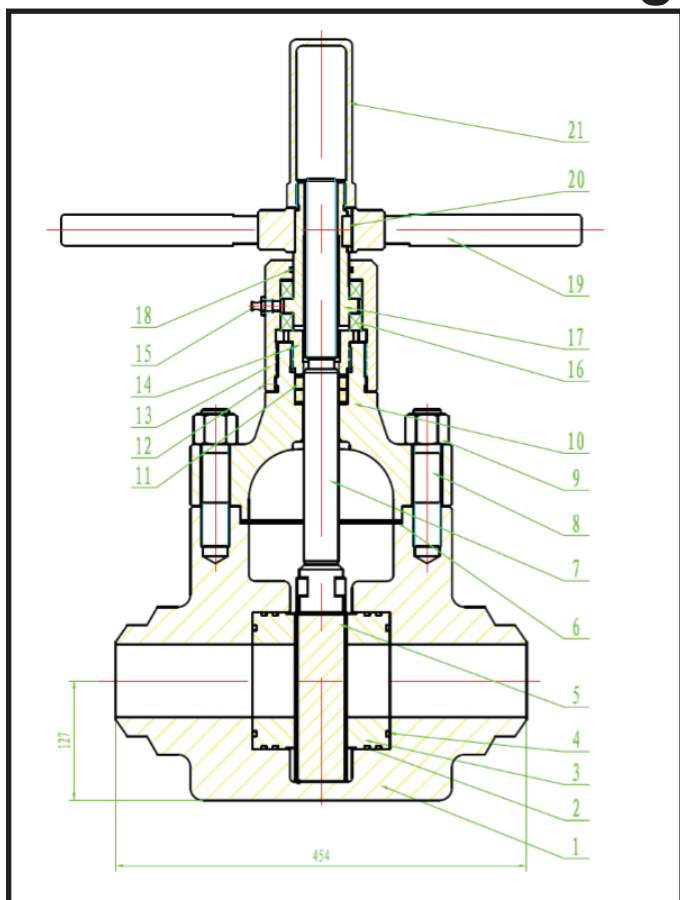
\* "T" are only used when parts are for 1502 integral style valves

## 4" 7500 lb RBCI Gate Valve



Product	Part Number
Gate Valve 1002 Integral Ends	RBMV4751002
Gate Valve XXH BW	RBMV475XXHBW
Body	YOUDM52-100-01
Body Seat O'Ring	YOUDM52-100-02
Seat Ring	YOUDM52-100-03
Seat O'Ring	YOUDM52-100-04
Gate	YOUDM52-100-05
Gasket	YOUDM52-100-06
Stem	YOUDM52-100-07
Body Stud	YOUDM52-100-08
Body Nut	YOUDM52-100-09
Bonnet	YOUDM52-100-10
Stem Packing	YOUDM52-100-11
Housing Screw	YOUDM52-100-12
Housing	YOUDM52-100-13
Retainer	YOUDM52-100-14
Lube Fitting	YOUDM52-100-15
Bearing	YOUDM52-100-16
Stem Screw	YOUDM52-100-17
Secondary Seal	YOUDM52-100-18
Handwheel	YOUDM52-100-19
Keyway	YOUDM52-100-20
Stem Cap	YOUDM52-100-21
Seal Kit	YOUDM52-100-SK

## 5" 7500 lb RBCI Gate Valve



Product	Part Number
Gate Valve 1002 Integral Ends	RBMV5751002
Gate Valve 1502 Integral Ends	RBMV5751502
Body	YOUDM52-125-01
Seat Body O'Ring	YOUDM52-125-02
Seat Ring	YOUDM52-125-03
Seat O'Ring	YOUDM52-125-04
Gate	YOUDM52-125-05
Gasket	YOUDM52-125-06
Stem	YOUDM52-125-07
Body Stud	YOUDM52-125-08
Body Nut	YOUDM52-125-09
Bonnet	YOUDM52-125-10
Stem Packing	YOUDM52-125-11
Housing Screw	YOUDM52-125-12
Housing	YOUDM52-125-13
Retainer	YOUDM52-125-14
Lube Fitting	YOUDM52-125-15
Bearing	YOUDM52-125-16
Stem Screw	YOUDM52-125-17
Seal	YOUDM52-125-18
Handwheel	YOUDM52-125-19
Keyway	YOUDM52-125-20
Stem Cap	YOUDM52-125-21
Stem Packing Washer	YOUDM52-125-PW
Seal Kit	YOUDM52-125-SK



# BUTTERFLY VALVES

Butterfly valves are used as a switch control for low pressure pipeline media and to cut off and throttle pipelines. The design of these butterfly valves are created based off the standards set by API609/ISO5752/BS5155. The standards used to create the flange are set by ANSI125#/150#, JIS5K/10K/16K, DIN 2501 PN6/PN10/PN16, and BS4504 PN10/PN16.

## Materials:

- Body Material: GG25/GGG40/GGG50
- Disc Material: DI/SS304/SS316/AL-BZ
- Stem Material: SS410/SS416/SS420/SS304/SS316
- Seat Material: NBR/EPDM/PTFE/VITON



## Features:

- Small in size and light in weight
- Easy to install and maintain
- Can be mounted wherever needed
- Simple and compact construction
- Has minimal operating torque meaning it has energy saving qualities
- Has excellent regulation performance because of small flow block
- Has a wide selection of materials making it suitable for a variety of media.

Size (in)	Part Number
2	BFV2W
3	BFV3W
4	BFV4W
5	BFV5W
6	BFV6W
8	BFV8W
10	BFV10W
12	BFV12W

# HAMMER UNIONS

Hammer unions are comprised of two halves, a threaded female half and a wing male half with a swivel nut, that are connected through high pressure threads or welds. The wing male half with the swivel nut fits and seals with the threaded female half.

## Features:

- Made from high quality steel
- Operates under bad weather conditions
- Easy to assemble and fix
- Excellent mechanical performance and sealing properties

Hammer unions are colour coded to specify pressure ratings. The following chart indicates the colour coding and the specific pressure rating for each type of hammer union.


Fig No	Assembly Colour key for Standard Service	Pressure Rating (psi)				Nominal Pipe Size (in mm)											
		Standard Service		Sour Gas Service		1	1 1/4	1 1/2	2	2 1/2	3	4	5	6	8	10	12
		Cold Working	Test	Cold Working	Test	25	32	40	50	65	80	100	125	150	200	250	300
50		500	750	NA	NA							✓	✓				
100		1000	1500	NA	NA				✓	✓	✓	✓		✓	✓		
200		2000	3000	NA	NA	✓	✓	✓	✓	✓	✓	✓		✓	✓	✓	
206		2000	3000	NA	NA	✓	✓	✓	✓	✓	✓	✓		✓	✓	✓	
207		2000	3000	NA	NA						✓	✓		✓			
211		2000	3000	NA	NA		✓	✓	✓	✓	✓	✓					
400		2500	3750	2500	3750									✓	✓		✓
400		4000	6000	4000	6000				✓	✓	✓	✓					
600		6000	9000	NA	NA	✓		✓	✓	✓	✓	✓					
602		6000	9000	6000	9000	✓	✓	✓	✓	✓	✓	✓					
1002		10 000	15 000	7500	12 000	✓	✓	✓	✓	✓	✓	✓	✓				
1003		10 000	15 000	7500	12 000				✓		✓	✓	✓				
1502		15 000	22 500	10 000	15 000	✓			✓		✓	✓					
2002		20 000	30 000	NA	NA				✓		✓	✓					
2202		NA	NA	15 000	22 500				✓		✓	✓					

Fig No.	Size	Part Number
200	8	HU2008XH
400	4	HU4004THRD
	12	HU12400
602	2	HU2602XXH
	3	HU3602XXH
	4	HU4602XXH
1002	4	HU41002XXH
	5	HU10025XXH
1502	2	HU21502XXH
	3	HU31502XXH
	4	HU41502XXH
	5	HU51502XXH





Air unions are widely used in pipelines that have low pressures, large diameters, or are frequently removed from service. They are especially used in pipeline connections that are involved in drilling mud solid control systems.

## Structural Features:

<b>Structure:</b>	Steel shell and air tube
<b>Working Temperature:</b>	-45 °C - 50 °C
<b>Maximum Seal Pressure:</b>	0.414 MPa
<b>Pneumatic Recovery Time After Deflation:</b>	1 - 3 Seconds
<b>Standard Size:</b>	4", 6", 8", 10", 12", 14", 16"

## Advantages:

- Quick to install and seal
- Easy to maintain
- No wrenches, bolts, and nuts required
- No tools needed to remove the air tube from the pipeline
- Allows pipe expansion or misalignment to occur without breaking the seal

Product	Size	Part Number
Air Union Assembly	6	Airunion6
	8	Airunion8
	10	Airunion10
	12	Airunion12
	14	Airunion14
	16	Airunion16
Air Union Tube	6	AUT6
	8	AUT8
	10	AUT10
	12	AUT12
	14	AUT14
	16	AUT16



# HAMMER SEAL UNIONS

Hammer seal unions are designed to join mud tanks without the use of flanged connections. There are two halves, an externally threaded female half and an internally threaded male nut. To join the two halves, the externally threaded female portion of the union is welded to a stub of pipe at the tank wall. This connecting pipe extends through the nut, the macro o-ring, and then into the externally threaded female portion. The internally threaded nut is then hammered into the female tightly, causing the captive o-ring to be compressed into a "D" square cross section.

## Features:

- Cross-section of seal ring is elongated ensuring that the sealing surface is greater when in contact with the pipe
- Up to 7° of pipe misalignment is acceptable

Product	Size	Part Number
Hammer Seal Union with O'Ring	6"	6HSU
	8"	8HSU
	10"	10HSU
	12"	12HSU
Hammer Seal Union O'Ring	6"	6HSUOR
	8"	8HSUOR
	10"	10HSUOR
	12"	12HSUOR



# MUD PUMP EXPENDABLES

Product	Part Number
4 1/2" Liner Gasket 12P160	45LG12P160
4 1/2" Urethane Bonded Piston	45UBP
5" Liner Gasket 12P160	50LG12P160
5" Urethane Bonded Piston	50UBP
5 1/2" Liner Gasket 12P160	55LG12P160
5 1/2" Urethane Bonded Piston	55UBP
4 1/2" Liner 12P160	Liner12P160 4.5
5" Liner 12P160	Liner12P160 5
5 1/2" Liner 12P160	Liner12P160 5.5
Valve Seat, FO NT API6	ND6S1
Valve, High Temperature Urethane NT API6	ND6V2HT
Valve Seat, FO NT API7	ND7S1
Valve. High Temperature Urethane NT API7	ND7V2HT

# RUBBER PRODUCTS

## PIPE WIPERS

Our pipe wipers are made of rubber compounds that are resistant to cutting, tearing, and abrasion. We sell flat and split pipe wipers that are composed of either nitrile or urethane.

Split wipers are made with a spring steel reinforced ring with a split that allows the wiper to be threaded onto the pipe easily. They are symmetrical with a one piece design with multiple wiping action that allows two full turns of wiping action around the full circumference of the pipe. These pipe wipers have no gaps in the inner wiping edge which means these wipers do not leave any unwiped streaks on the pipe.

Flat pipe wipers have a series of concentric rings that are moulded around the inner wiping surface. These rings each carry a specific size that identifies the area of the centerfold to be cut out for a specific drill pipe size.

Material	Description of Pipe Wipers	Bore Size	Part No.
Urethane	Flat	4 1/2" x 17"	PWFU4.5x17
		4" x 17"	PWFU4x17
		5 1/2" x 17"	PWFU5.5x17
		5" x 17"	PWFU5x17
	Split	4 1/2" x 17"	PWSU4.5x17
		4" x 17"	PWSU4x17
		5 1/2" x 17"	PWSU5.5x17
		5 1/2" x 19"	PWSU5.5x19
		5 1/2" x 22"	PWSU5.5x22
		5" x 17"	PWSU5x17
		5" x 19"	PWSU5x19
		5" x 22"	PWSU5x22
Nitrile	Flat	3 1/2" x 17"	PWF3.5x17
		4 1/2" x 17"	PWF4.5x17
		4" x 17"	PWF4x17
		5" x 17"	PWF5x17
	Split	3 1/2" x 17"	PWS3.5x17
		4 1/2" x 17"	PWS4.5x17
		4" x 17"	PWS4x17
		5 1/2" x 17"	PWS5.5x17
		5 1/2" x 22"	PWS5.5x22
		5" x 17"	PWS5x17
		5" x 22"	PWS5x22



## ELEVATOR BALANCING STRAP/TONG PULL BACK STRAP

Product	Part Number
Elevator Balancing Strap	EBS
Tong Pull Back Strap	TPB

780-986-1413



# SHAKER SCREENS



At Cyclone Supplies, we sell shaker screens that are made from high quality fiber glass that improve the quality of the plastic of the shaker screen as well as increases the screen temperature resistance to 140 °C.

When the mesh is being heat pressed, there is tension applied to 4 sides of the mesh. This tension minimizes the gap between the top screen and the support screens which results in a longer screen life. The high performance wire mesh configuration is compliant to API RP13C with a normally longer screen life.

The screens with composite frames save cost because they are repairable. The composite frame usable area is 10% to 20% larger in comparison to metal frames. And since the composite frame is covered by plastic, it is rust resistant in long time storage of up to 5 years.

## ASTM MESH AND API CUT POINT     API No. AND CUT POINT

D100 Cut Point	ASTM Single Mesh
2000 microns	ASTM 10 mesh
1000 microns	ASTM 18 mesh
850 microns	ASTM 20 mesh
710 microns	ASTM 25 mesh
600 microns	ASTM 30 mesh
500 microns	ASTM 35 mesh
425 microns	ASTM 40 mesh
355 microns	ASTM 45 mesh
300 microns	ASTM 50 mesh
250 microns	ASTM 60 mesh
212 microns	ASTM 70 mesh
180 microns	ASTM 80 mesh
150 microns	ASTM 100 mesh
125 microns	ASTM 120 mesh
106 microns	ASTM 140 mesh
90 microns	ASTM 170 mesh
75 microns	ASTM 200 mesh
63 microns	ASTM 230 mesh
53 microns	ASTM 270 mesh
45 microns	ASTM 325 mesh
38 microns	ASTM 400 mesh

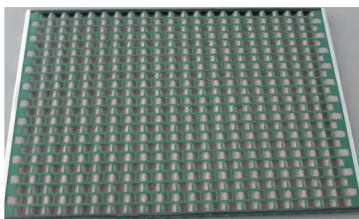
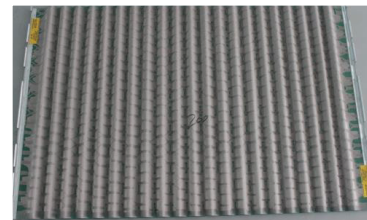
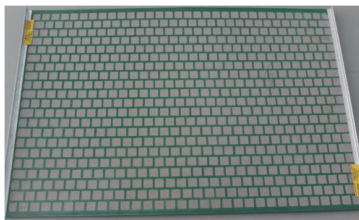
D100 Cut Point	API No.
>1850.0 to 2180.0	API 10
>780.0 to 925.0	API 20
>462.5 to 550.0	API 35
>390.0 to 462.5	API 40
>275.0 to 327.5	API 50
>231.0 to 275.0	API 60
>196.0 to 231.0	API 70
>165.0 to 196.0	API 80
>137.5 to 165.0	API 100
>116.5 to 137.5	API 120
>98.0 to 116.5	API 140
>82.5 to 98.0	API 170
>69.0 to 82.5	API 200
>58.0 to 69.0	API 230
>49.0 to 58.0	API 270
>41.5 to 49.0	API 325
>35.0 to 41.5	API 400

# DERRICK FLC 2000 SCREEN

**Dimension:** 697 x 1053 mm

**Features:**

- Flat or pyramid screens available
- Compatible with Flo Line Cleaner 2000 3 panel or 4 panel shale shaker and mud cleaner
- Mesh available in SS304/SS316 stainless steel
- Fine diameter mesh or coarse diameter mesh available for different drilling formation
- Hook strip flat shaker screen has a better economic cost while the pyramid screen has a larger screen area



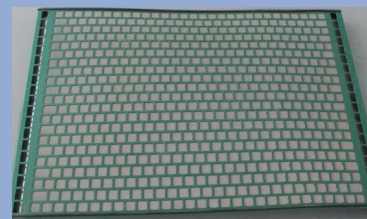
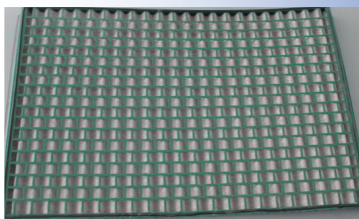
API	Mesh	D100 Cut Point (μm)	Conductance (kD/mm)	Non-blank Area (sq. ft.)	Part Number
100	140	164	2.66	5.3	DS100140MF\
140	175	101	1.89	5.3	DS140175MF
170	210	83	1.34	5.3	DS170200MF

# DERRICK FLC 500 SCREEN

**Dimension:** 695 x 1050 mm

**Features:**

- Flat or pyramid screens available
- Compatible with Flo Line Cleaner 2000 3 panel or 4 panel shale shaker and mud cleaner
- Mesh available in SS304/SS316 stainless steel
- Fine diameter mesh or coarse diameter mesh available for different drilling formation
- Hook strip flat shaker screen has a better economic cost while the pyramid screen has a larger screen area





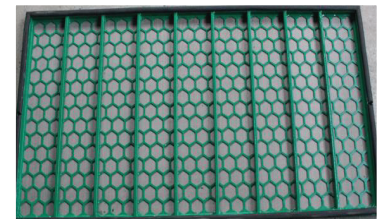
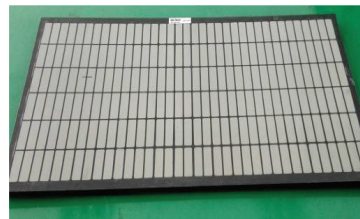
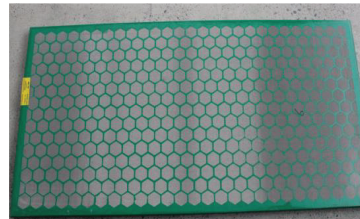
API	Screen Type	D100 Cut Point (µm)	Conductance (kD/mm)	Non-blank Area (sq. ft.)	Part Number
100	Pyramid	164	2.66	8.3	DSPMD500API100
120		134	1.89	8.3	DSPMD500API120
140		101	1.89	8.3	DSPMD500API140
170		83	1.34	8.3	DSPMD500API170
200		73	1.32	8.3	DSPMD500API200
230		68	0.71	8.3	DSPMD500API230
40		439	8.64	8.3	DSPMD500API40
50		285	5.17	8.3	DSPMD500API50
80		193	2.76	8.3	DSPMD500API80
100	Flat	164	2.66	4.05	DSPWP500API100
120		134	1.89	4.05	DSPWP500API120
140		101	1.89	4.05	DSPWP500API140
170		83	1.34	4.05	DSPWP500API170
200		73	1.32	4.05	DSPWP500API200
230		68	0.71	4.05	DSPWP500API230
50		285	5.17	4.05	DSPWP500API50
70		203	3.33	4.05	DSPWP500API70
80		193	2.76	4.05	DSPWP500API80

## COBRA/VENOM SCREEN

**Dimension:** 635 x 1250 mm    **Weight:** 15 kg

### Features:

- Composite and metal frame available
- Compatible with NOV Brandt Cobra, King Cobra, Mini Cobra, Venom, LCM-2D, and LCM-3D shale shaker or mud cleaner or mud conditioner
- Mesh available in SS304/SS316 stainless steel
- Fine diameter mesh or coarse diameter mesh available for different drilling formations
- Composite frame is used for its bigger usable screen area, longer life, light weight, and corrosion resistance



API	Mesh	Screen Type	D100 Cut Point (µm)	Conductance (kD/mm)	Non-blank Area (sq. ft.)	Part Number
100	215	Composite Frame	164	2.66	6.0	KCVS100215CF
120	255		134	1.89	6.0	KCVS120255CF
140	280		101	1.89	6.0	KCVS140280CF
60	105		268	4.1	6.0	KCVS60105CF
80	145		193	2.76	6.0	KCVS80145CF

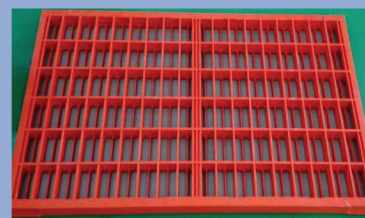
# SWACO SCREEN/MONGOOSE SCREEN

**Dimension:** 585 x 1165 mm

**Weight:** 12 kg

## Features:

- Composite and metal frame available
- Compatible with MI-Swaco/MONGOOSE PRO, MONGOOSE PT, and MEERKAT shale shaker or mud cleaner
- Mesh available in SS304/SS316 stainless steel
- Fine diameter mesh or coarse diameter mesh available for different drilling formations
- Available in the colours orange, black, or green
- Composite frame is used for its bigger usable screen area, longer life, light weight, and corrosion resistance



## SWACO SCREEN

API	D100 Cut Point (µm)	Conductance (kD/mm)	Non-blank Area (sq. ft.)	Part Number
120	134	1.89	2.64	ALSAPI120
140	101	1.89	2.64	ALSAPI140
170	83	1.34	2.64	ALSAPI170
80	193	2.76	2.64	ALSAPI80
100	164	2.66	2.64	ALSAPI100

## MONGOOSE SCREEN

API	Mesh	Screen Type	D100 Cut Point (µm)	Conductance (kD/mm)	Non-blank Area (sq. ft.)	Part Number
100	165	Composite Frame	164	2.66	5.5	MS100165CF
120	200		134	1.89	5.5	MS120200CF
140	230		101	1.89	5.5	MS140230CF
170	270		83	1.34	5.5	MS170270CF
200	325		73	1.32	5.5	MS200325CF
60	84		268	4.1	5.5	MS6084CF
80	120		193	2.76	5.5	MS80120CF



# CYCLONE CONNECTORS



Product Description				Product Specification				Technical Description									
The Connector				API Spec 6A				4" Connector									
Part	Material Spec	Grade	Heat No.	Chemcical Composition								Mechanical Property					
				C	Si	Mn	P	S	Ni	Cr	Mo	bσ	σ 0.2	△s	φ	AKV	Hard-ness
												MPa		%		J	
Clamps	GB/T3077	35CrMo	4307578	0.35	0.28	0.57	0.01	0.005	0.04	0.92	0.17	735	536	22	68		HB210
Hubs	GB/T1591	16Mn	5768109	0.17	0.22	1.61	0.011	0.003	0.01	0.05	0.04	526	340	28.5		78	HB170
Ring	GB/T699	45	TX1500653	0.45	0.22	0.67	0.018	0.010	0.02	0.06	0.08	667	398	20	45		HB186
Stud	A193	B7	230655	0.43	0.23	0.75	0.013	0.011	/	0.92	0.21	875	739	28	49	37	HB295
Nut	A194	2H	22105	0.44	0.23	0.54	0.015	0.015	/	0.34	0.18	790	664	27	46	40	HB276

Product	Part Number
Connector Clamp 4"	CLAMP4
Connector Set 4" XXH	CON.SET4
Hub Butt Weld A105 XXH 4"	HUB 4
Seal Ring #31 for 4" XXH Clamp Set	SEAL RING
Stud and Nut Set for 4"	STUD SET

Winter drilling and service rigs outfitted with Dragon Line Heaters' patented design have the ability to efficiently heat water for pressure washers without damaging the pressure units with high heat.

Environmental responsibility is crucial to remaining competitive in the marketplace. Stop using additional energy sources to heat pressure washer unit water. Use the on-site steam through the Dragon Line Heater to do the job effectively, efficiently and with environmental awareness.

## Overview

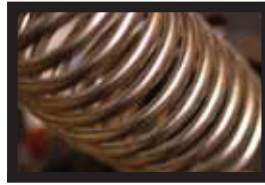
- Dragon Line Heaters' innovative design and rugged build enables it to withstand extreme weather and use.
- Dragon Line Heaters' utilize boiler steam to heat water flow to pressure washers using a stainless steel coil inside the heating chamber.
- Dragon Line Heaters' allow users to manually adjust water temperature from cold to steaming hot.
- Water heated after the pressure washer pump to avoid pump damage.
- Pressurized hot water through hand wand.

## Features

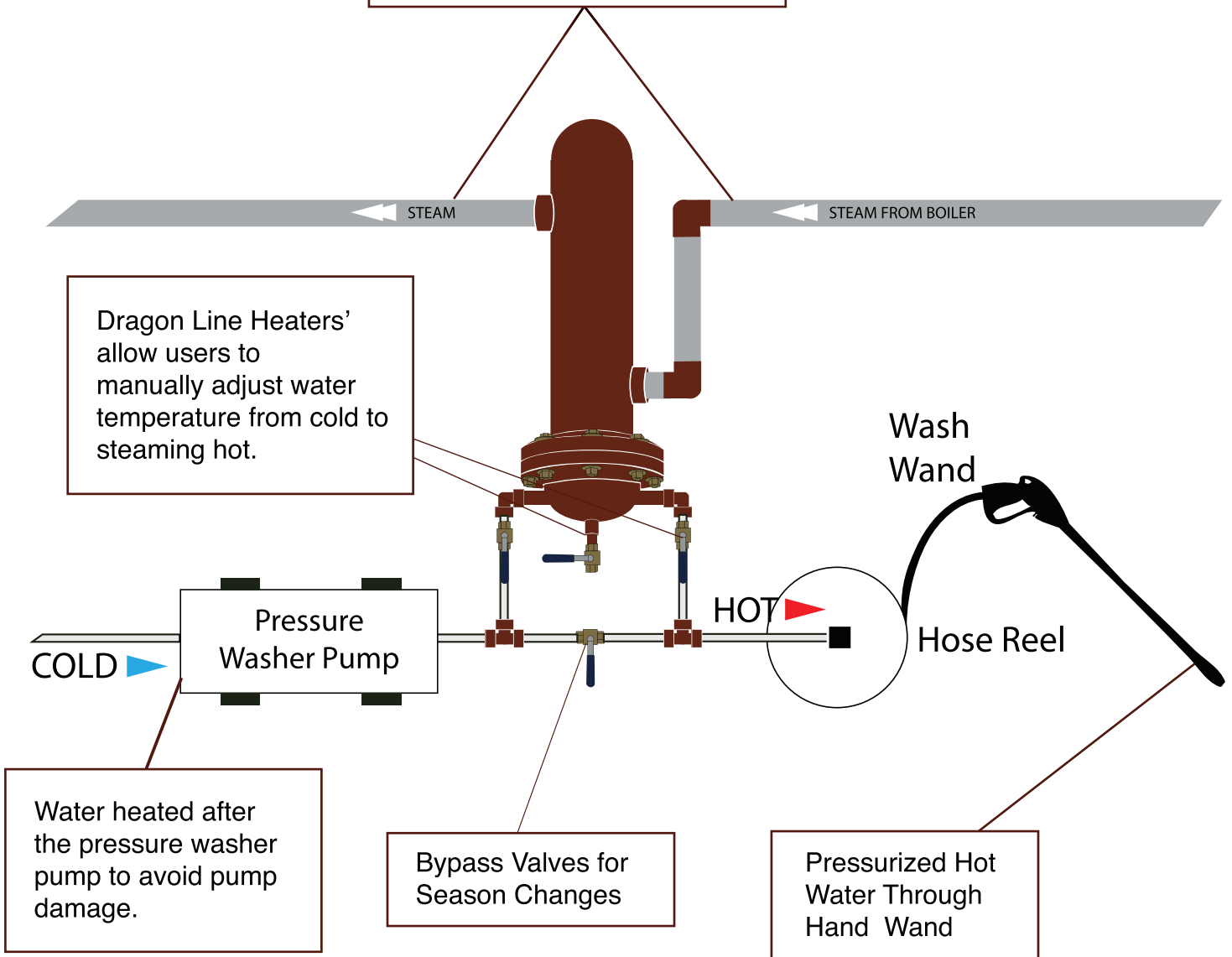
### DRAGON LINE HEATERS:

- ABSA Certified
- Patented Unit
- Environmentally responsible (utilizes rig boiler system)
- No secondary fuel source (complies with rig site safety)
- High Pressure Rated Construction
- Bypass Valves for Season Changes
- Stainless Steel Heating Coil
- Heats from Cold to 200°F
- Will Not Damage Pressure Washer
- Zero Pressure Loss
- Drain valves to prevent freezing while in transit
- Extensive Field Testing





Dragon Line Heaters' utilize boiler steam to heat water flow to pressure washers using a stainless steel coil inside the heating chamber.



# LINE HEATERS PART NUMBERS

Product	Quantity per Unit	Part Number
<b>Dragon Line Heater</b>		
Dragon Line Heater	1	DLH
Dragon Line Heater coil	1	DLH-C
Dragon Line Heater repair kit	1	DLHRK
<b>Ball Valve</b>		
1/2" 2M Threaded ball valve	3	1750288
<b>Fittings</b>		
1/2" 3M Forged steel threaded 90	2	123MFS90
1/2" 3M Forged steel threaded HEX union	4	123MFSHEXUN
1/2" 3M Forged steel threaded tee	2	123MFSTEE
1/2" Forged steel hex head plug	2	12FSPLUG
1/2" x 2" XH A106 seamless steel nipple TBE	6	12x2XHNIP
1/2" x 6" XH A106 seamless steel nipple TBE	2	12x6XHNIP
1/2" x 2 1/2" XH A106 seamless steel nipple TBE	1	12x212XHNIP
6" Pipe saddle clamp with bolts and nuts	1	PHMSC/125-6
6" 150 316 Flex gasket	1	FLX316150/6
3/4" x 4" B7 stud	8	34x4B7Stud
3/4" 2H hex nut	16	342HNUT
<b>Tubing</b>		
3/8" Tubing ferrule set	4	10-6-S6
3/8"T x 12/2" MNPT 316 stainless steel tube fitting	2	6-8N-S6
3/8" 316 Stainless steel tubing nut	4	TSN6

# THERMAL BLANKETS

These blankets are used throughout the oil patch where valves and piping have to be heated

- Gas plants
- Modules
- Risers
- BOP's
- Pipeline valves
- Fracing valves and connections





# KLONDIKE LUBRICANTS

KLONDIKE manufactures packaged and bulk oils and industrial lubricants and chemicals that are globally certified by accredited organizations such as the American Petroleum Institute (API) and International Lubricant Standardization and Approval Committee (ILSAC). Their oils, greases, and fluids undergo strict testing requirements and quality assurance processes using their own in-depth internal technical process. In addition, they are also further tested in a variety of other world-class technical institutes so that their products meet and exceed top performance requirements of any industry. To ensure that their lubricating oils and greases are high performing, maximally efficient, and protect equipment totally, KLONDIKE uses the finest mineral and synthetic base oils with tightly advanced additive technology.

## HEAVY DUTY ENGINE OILS

### Features:

- Formulated to assist in maximizing engine life and minimizing wear
- Provide the engine with a protective film that disperses soot and reduces sludge
- Provides a balance between durability, emission control, optimized drain intervals, and improved outcomes for equipment
- Specially engineered with Million Mile Technology allowing the needs of heavy duty diesel and gasoline engines to be met under all service conditions
- Approved by world's leading manufacturers such as Cummins, Detroit, Volvo, Renault, Mack, and Ford



## AUTOMOTIVE ENGINE OILS

### Features:

- Formulated for optimum efficiency and for use in modern, high efficient engines subjected to increasing levels of stress such as stop-and-go city driving, frequent short trips, extreme high and low operating temperatures, extended idling, and towing
- Offer superior oxidation stability, extra protection against heavy load conditions, additional high temperature protection, and better cold weather properties than conventional motor oils
- Formulated under the newest technology
- Certified under the latest ILSAC GF-5 and API SN specifications



# GEAR LUBRICANTS

## Features:

- Formulated for maximum protection, durability, and efficiency under all conditions and climates
- Protects against severe wear while balancing fluid durability in heavy load conditions which include extended drain intervals when applicable



# TRANSMISSION FLUIDS

## Features:

- Formulated for use in a full range of automatic transmissions and provide premium shifting characteristics
- Offer smooth yet responsive shifting, long service life, and fuel efficiency
- Engineered to provide improved performance, extended transmission life, premium flow characteristics at very low temperatures, and protection against oxidation, varnish, and sludge at high temperatures



# HYDRAULIC FLUIDS

## Features:

- Designed to operate under the most extreme conditions
- Formulated with the finest base oils
- Uses an additive system that delivers unrivaled performance and protection





# INDUSTRIAL AND FUNCTIONAL OILS

## Features:

- Formulated for exceptional performance and reliability
- Uses world class technologies that have been trusted and proven by industry professionals
- High quality
- Operates under extreme climatic-high or low temperature conditions
- Offers unsurpassed durability and performance for equipment under high heat conditions
- Performs flawlessly in the logging and saw mill industries



## GREASES

## Features:

- Provide premium lubrication in difficult operating conditions
- Tailored to industry requirements for improved productivity
- Engineered for environments with extreme temperature requirements, moisture and dirt contamination, heavy loads, extended maintenance intervals, and other conditions that impact performance
- Created with the finest base oils and additives that provide outstanding tackiness, lubrication, and protection
- Guard against oxidation and wear in extreme pressure and high temperature applications













P: 780-986-1413  
A: 1202 8 Street  
Nisku, Alberta, T9E 7M1  
W: [CycloneSupplies.com](http://CycloneSupplies.com)  
E: [Sales@CycloneSupplies.com](mailto:Sales@CycloneSupplies.com)